



INTRODUCING
PALMGREN®

WORKHOLDING & MACHINERY

OFFER GOOD THRU 8/31/24 OR WHILE SUPPLIES LAST!



Scan or click here for more product info!

COMBINATION BENCH AND PIPE VISES

- 65,000 PSI ductile castings
- 70% stronger than the competitive u-shaped styles
- Sealed construction
- Straight line pull power tunnel design
- Precision fit slide bar to 0.003"
- Replaceable serrated steel jaws



Item #	Capacity	List Price	SALE
9629744	4"	\$456.00	\$285.95
9629745	5"	\$518.00	\$323.95
9629746	6"	\$596.00	\$372.95
9629748	8"	\$828.00	\$517.95

HEAVY-DUTY BENCH GRINDERS - POWERGRIND™ SERIES

- Heavy duty capacitor motors that supply the extra current required during the start-up and operation under load
- Large adjustable tool rests for safe, efficient tilt and angle grinding
- Exclusive single port dust collection system, on selected models
- CSA approved OSHA compliant



9682075

Item #	Description	List Price	SALE
9682062	6" 1/3HP 115/230V grinder w/dust collection	\$233.00	\$207.95
9682081	8" 3/4HP 115/230V grinder w/dust collection	\$363.00	\$325.95
9682072	6" 1/2HP 115/230V grinder w/dust collection	\$422.00	\$375.95
9682073	8" 1 HP 115/230V grinder w/dust collection	\$643.00	\$575.95
9682075	10" 1.5HP 115/230V grinder w/dust collection	\$1,102.00	\$985.95

VARIABLE SPEED HEAVY-DUTY BENCH GRINDERS - POWERGRIND™ SERIES

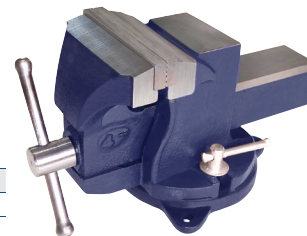
- Heavy duty capacitor motors that supply the extra current required during the start-up and operation under load
- Large adjustable tool rests for safe, efficient tilt and angle grinding
- Exclusive single port dust collection system, on selected models
- CSA approved OSHA compliant



Item #	Description	List Price	SALE
9682097	8" 1HP 115/240V Variable Speed Bench Grinder	\$874.00	\$655.95

UTILITY WORKSHOP VISE

- Replaceable hardened serrated steel jaws
- Locking swivel base
- Anvils with large working area



Item #	Description	List Price	SALE
9629716	6" Bench Vise W/Anvil	\$310.00	\$129.95
9629718	8" Bench Vise W/Anvil	\$350.00	\$179.95

COPPER JAW CAPS

- Designed to protect and avoid marring the surface of softer materials or fine workpieces.
- Convert your serrated jaw faces to a smooth surface.
- Palmgren's jaw caps have polished faces and pliable copper extensions for a sure-grip fit on any make of vise.
- These universal jaw facings fit simply by bending back the ears.



Item #	Size	List Price	SALE
9629759	4"	\$143.00	\$80.95
9629760	5"	\$143.00	\$80.95
9629762	6"	\$180.00	\$101.95
9629764	8"	\$210.00	\$118.95



PALMGREN
3 YEAR
WARRANTY

PEDESTAL STAND

- Fits all bench grinders, buffers and belt grinders
- Multi-hole top for easy securing of finishing tool to stand
- Quench pot



Item #	List Price	SALE
9670101	\$187.00	\$165.95

PRODUCTION TAP

- Parallel arm with 8" to 55" reach
- Stationary bench bracket
- Quick change tooling adaptor
- Air preparation unit with lubricator, filter, regulator and pressure gauge
- High torque reversible air motor

30-day GTO & two free tap holders a \$198.00 value MRK PR118

Item #	Description	List Price	Sale Price
9680410	Pneumatic Tapping Machine, 55" reach - 400 rpm	\$2,838.00	\$2,695.95
9680411	Pneumatic Tapping Machine, 55" reach - 700 rpm	\$2,838.00	\$2,695.95
9680412	Pneumatic Tapping Machine, 55" reach - 300 rpm	\$3,444.00	\$3,229.95



9680412

CALL PURITY FOR MORE DETAILS AND OTHER OPTIONS! WWW.PURITYGAS.COM



INTRODUCING PALMGREN® WORKHOLDING & MACHINERY

OFFER GOOD THRU 8/31/24 OR WHILE SUPPLIES LAST!



Scan or click here for more product info!

7" X 12" HORIZONTAL METAL CUT BAND SAW

- Step pulley drive train with 4 speed settings
- Adjustable hydraulic down feed of the saw head
- Flood coolant system



Item #	List Price	SALE
9683311	\$2,536.00	\$1,995.00

BELT GRINDERS

- Belt is adjustable for use in either the vertical or horizontal position or any position in-between
- Front mounted on/off paddle switch
- Simple belt tensioning and adjustment
- Full belt guard



Item #	Description	List Price	SALE
9682401	Belt Grinder 1in.	\$405.00	\$360.95
9682402	Belt Grinder 2in.	\$514.00	\$459.95



2" x 6" belt & disc sander
WITH 9683311 OR 9683308 PURCHASE.
ITEM 9681061. VALUED AT \$304.00.

MRK PR115



8" X 12" HORIZONTAL BAND SAW

- Hydraulic feed control for cutting stock at variable rates
- Adjustable blade guides deliver accurate cuts
- Chip blade brush
- Coolant system with adjustable coolant flow
- Castors that roll easy for positioning
- 1HP - 120/240V - 1 PH



Item #	List Price	SALE
9683308	\$3,477.00	\$2,550.00



COMBINATION BELT & DISC FINISHING MACHINES

- 6 x 48" belt with a 10" disc floor model with open stand

Item #	Description	List Price	SALE
9681109	10" disc	\$1,711.00	\$1,549.95

HEAVY DUTY 16-SPEED FLOOR STEP PULLEY DRILL PRESSES

Maximum spindle run out of 0.0005"
Rack and pinion table raiser
Heavy cast metal 3 spoke quill feed handle with ergonomic speed feed handle
Front mounted industrial paddle-type power switch



9680177

20" VARIABLE SPEED BELT DRIVE DRILL PRESS

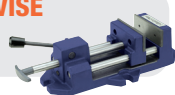
- Forward and reverse spindle switch
- Hand wheel speed control
- Digital speed readout



QUICK ACTION VISE

Item #9612421
VALUED AT \$252.00

MRK PR117



QUICK ACTION VISE

Item #9612421
VALUED AT \$252.00

MRK PR117



Item #	Description	List Price	SALE
9680226	115/230V Single Phase	\$6,043.20	\$5,295.95
9680227	230/460V Three Phase	\$5,951.00	\$5,295.95

Item #	Description	List Price	SALE
9680158	15" 115/230V - 1 PH	\$1,296.00	\$1,215.95
9680177	17" 115/230V - 1 PH	\$1,541.00	\$1,445.95
9680209	20" 115/230V - 1 PH	\$2,251.00	\$2,195.95

Grand Rapids
(616) 532-2375 1-888-532-2375

Angola, IN
(260) 665-7241

Battle Creek, MI
(269) 660-1907

Cadillac, MI
(231) 779-2468

Elkhart, IN
(574) 389-8760

Fort Wayne, IN
(260) 497-7565

Gaylord, MI
(989) 731-1111

Holland, MI
(616) 848-7650

Kalamazoo, MI
(269) 344-0518

Lansing, MI
(517) 321-9555

Mt. Pleasant, MI
(989) 775-0898

Muskegon, MI
(231) 773-2510

Pierceton, IN
(574) 594-2551

Saginaw, MI
(989) 755-4344

Traverse City, MI
(231) 922-0851

Warsaw, IN
(574) 267-6066

Wixom, MI
(248) 230-8468

Family Owned & Locally Operated Since 1938



puritygas.com