

# Trailblazer® 330

Gas Engine-Driven Welder 

## Quick Specs



### Industrial Applications

Fabrication  
Maintenance  
Repair  
Structural steel work  
Sheet metal  
Pipe

### Processes

Stick (SMAW)  
MIG (GMAW)\*  
Flux-cored (FCAW)\*  
DC TIG (GTAW)  
Air carbon arc (CAC-A) cutting and gouging  
Rated: 3/16-inch carbons  
Capable: 1/4-inch carbons  
Air plasma cutting and gouging with optional Spectrum® models

\*With wire feeder.

**Output Range (gas models)** DC stick 20–330 A  
MIG/flux-cored 15–40 V  
DC TIG 20–330 A

### Auxiliary Power Output Rated at 104°F (40°C)

12,000 watts peak, 10,500 watts continuous

### Electronic Fuel Injection (EFI) (option)

### Excel™ Power (option)

2,400 watts (120 V, 20 A) 60 Hz pure sine power at all speeds

### Battery Charge/Crank Assist (option on EFI models)

Battery charge 12/24 V, 150 A Crank assist 12/24 V, 300 A

**Reliable engine-driven welders with unbeatable arc performance, providing the smoothest, most stable arc in the industry.**

The Trailblazer exclusive technologies — advanced Auto-Speed™ and optional Excel™ power — deliver superior runtimes, increase fuel efficiency, and improve engine-driven welder performance.

No other compact machine in the 300-amp class delivers more welding power or more auxiliary power with better fuel efficiency and less noise — for productive, profitable, quieter jobsites.

## WIRELESS INTERFACE CONTROL



Full control of your machine in the palm of your hand. See page 3.

**DYNAMIC DIG™** Optimized arc control for stick welding applications. See page 2.

## ArcReach®

Parameter control at the wire feeder or pendant without needing a control cord. See page 2.



**NEW!**

Trailblazer 330 EFI with ArcReach and optional Excel power shown.



**Easy to use**  
Digital interface speeds machine setup and makes it less complicated.



**Exceptional arc performance**  
Easy arc starts and less spatter.



**Easier mobility and uses less truck space and payload**  
Over 80 pounds lighter and 13 percent smaller than previous model.



**Easy maintenance**  
With its intuitive design, the daily maintenance of our Trailblazer engine-driven welder is fast and easy.



Engine-driven welder is warrantied for three years, parts and labor.  
Engine is warrantied separately by the engine manufacturer.



**Miller Electric Mfg. LLC**  
An ITW Welding Company  
1635 West Spencer Street  
P.O. Box 1079  
Appleton, WI 54912-1079 USA

**Equipment Sales US and Canada**  
Phone: 866-931-9730  
FAX: 800-637-2315  
International Phone: 920-735-4554  
International FAX: 920-735-4125

**MillerWelds.com**



# The Trailblazer® Advantage

## Dynamic DIG™ technology



**Ultra-adaptive arc control.** Unlike conventional DIG that provides a preset amount of short-clearing current, Miller-exclusive Dynamic DIG technology works on a time-based algorithm that automatically adjusts the amount of current required to clear a short. Delivers a smoother more consistent arc that can be tailored to match application, material, fit-up and welder technique.

## ArcReach® technology



**Parameter control at the wire feeder or pendant without needing a control cord.**

An ArcReach system allows you to change weld settings from your ArcReach feeder or stick/TIG remote, saving a trip to the power supply. ArcReach technology uses the existing weld cable to communicate welding control information between the feeder or stick/TIG remote and the power source. This technology eliminates the need for control cords, and their associated problems and costs.

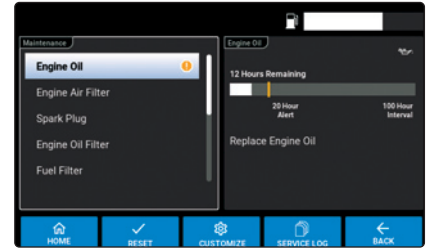
## Auto-Set™ technology

Auto-Set offers predefined weld settings to increase ease of use and ensure that the job is done right for operators of all skill levels.



## Data visibility

Predictive maintenance information helps you plan necessary service time. Productivity screens make it easier for you to monitor machine use.



## Direct spool gun connection

Make it easy to weld aluminum. Expand the types of jobs you can take on. Adapters are no longer required with the integrated 10-pin connection. Optimized for Spoolmate™ and Spoolmatic® spool guns.



## Advanced Auto-Speed™ technology

**Matches engine speed to load — a Miller exclusive.** Get the welding power you need — plus reduced fuel consumption and lower noise levels for a more profitable jobsite.

Advanced Auto-Speed technology automatically varies engine speed from 1,800 – 3,600 rpm to match compressed air, battery charge and weld demands — reducing fuel consumption, maintenance costs and noise for a safer, more efficient jobsite.

## Small, light design

Trailblazer engine-driven welders take up less space on trucks and trailers — leaving more room on your truck for other equipment and tools. Plus, they're easier to move around jobsites — even with weld cables attached.



## Long runtimes

Large 11-gallon fuel capacity means many hours of run time before refueling. Improved fuel system design reduces a no-start condition if overfilled.

## Typical equipment power usage

Trailblazer engine-driven welders will easily start and run the following equipment:

Equipment	Starting Watts	Running Watts
Barn Cleaner (5 hp)	11,600	3,000
Silo Unloader (5 hp)	12,200	4,300
Portable Conveyor (1/2 hp)	3,400	1,000
Milker (5 hp)	10,500	2,800
Hand Drill (1/2 inch)	600	600
Circular Saw (8-1/4 inch)	1,400	1,400
Air Compressor (1-1/2 hp)	8,200	2,200
Flood Lights (Vapor)	1,250	1,000
Spectrum® 625 X-TREME™ (30 A, 230 V, 1/2-inch cut)	6,900	6,900

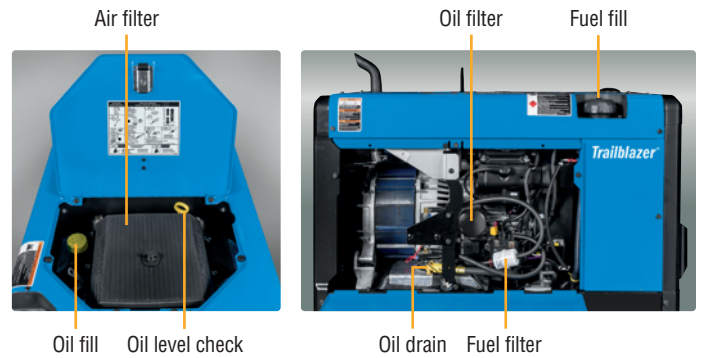
To size a unit that has enough power output in watts, add the watts for the items you want to simultaneously run. Tools with induction motors may require three to seven times the listed wattage when starting. **All data listed is approximate — check your tool for specific wattage requirements.**

# The Trailblazer® Advantage

## Easy maintenance

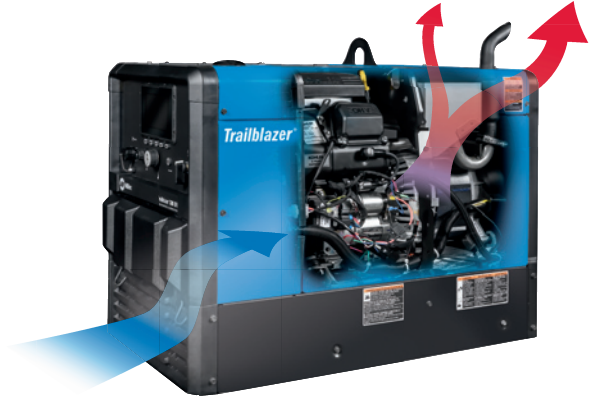
With its intuitive design, the daily maintenance of our Trailblazer engine-driven welders is fast and easy. Front panel maintenance displays help you know when your equipment needs to be serviced. And servicing is simple because of:

- Oil checks that can be performed easily through the top of the machine by the access door
- Toolless panels that allow for quick access
- Single-side fuel fill and oil drain/filter



## Reversed air flow for optimized cooling

Exclusive engine and interior componentry design operates cooler and more efficiently. The engine is rotated towards the front to create more efficient airflow. More efficient airflow and exclusive engine location are significant contributors to reduced sound level and size reduction. Hot air recirculation is eliminated when machine is mounted in tight spots, and internal parts are kept cool for optimal performance.



## Wireless interface control (option)

**WIRELESS** Get full control of your machine in the palm of your hand so you can work hassle free.  
INTERFACE CONTROL

With wireless interface control, you can change welding processes, adjust parameters, select and save preset programs, turn the machine on/off, get service reminders and more from wherever you are on the jobsite. Extend time between fill ups and maintenance intervals while eliminating the need to go back to your machine to make adjustments.

Wireless interface control is a factory-installed option available on select carbureted and EFI models.

### VIEW STATUS

View engine status, fuel level, and battery charge level of remote.

### SELECT PROCESSES

View and select between all available processes.

### CONTACTOR ON/OFF

Turn contactor on/off manually in remote welding mode.

### ENGINE ON/OFF

Turn engine on/off with remote.



### CUSTOM PROGRAMS

Save custom presets in up to four programs and easily switch between pre-programmed settings.

### FINE-TUNE ARC

Quickly adjust and save arc control settings including DIG, DIG range inductance and Auto-Stop.

### AMP/VOLT ADJUST

Adjust amperage or voltage, by increments or percentage, while welding.

## Electronic fuel injection (EFI) (option)

**Improve fuel efficiency for maximum productivity and profitability.**

Adding EFI to your Trailblazer engine-driven welder adds multiple benefits. With EFI, you'll get faster, more-reliable starts in any weather — no choke adjustments needed. EFI-equipped Trailblazer machines are also up to 42 percent more fuel efficient than standard carbureted models, improving profitability. Plus, refueling less frequently means you'll spend more of your time welding, improving productivity. Add Excel power to your Trailblazer with EFI for maximum fuel efficiency.

**Increased performance at high altitude.** Electric fuel pumps are now standard on all EFI models, leading to better performance when operating at altitudes of 5,000 feet or greater.

## Excel™ power (option)

**Power at idle — a Miller exclusive.** Unlike competitive machines that provide auxiliary power only at 3,600 rpm (max), Excel power delivers a full 2,400 watts (20 A) of 120-volt inverter-based, pure sine-wave power at idle. With Excel power you can operate jobsite tools like grinders at quiet, fuel-saving speeds.

Refueling time and operating costs are reduced with Excel power, which means more productivity and profitability. Plus everyone on the jobsite gets a better working environment because noise levels and exhaust emissions are lowered. Excel power — available only from Miller.

## Battery charge/crank assist (option)

**Reduce downtime with battery charge/crank assist capability.** Designed and recommended for mechanics or anyone else responsible for a fleet of trucks or equipment. By using your Trailblazer to charge dead batteries or jump a stubborn engine, you'll keep your crew working and the fleet up and running.

*Note: Battery charge/jump cables (300422) must be ordered separately.*

# Specifications (Subject to change without notice.)



Welding Mode	Process	Amp/Volt Ranges	Rated Weld Output at 104°F (40°C)*	Single-Phase Auxiliary Power	Sound Levels at 7 m (23 ft.)	Dimensions	Net Weight**
CC/DC	Stick/TIG	20–330 A	330 A at 30 V, 100% duty cycle	<b>Peak</b> 12,000 watts	<b>Weld</b> 150 A load: 65 dB (90 Lwa) 330 A load: 73.5 dB (98.5 Lwa) <b>Auxiliary power</b> Excel power: 65 dB (90 Lwa) 12 kW standard power: 73.5 dB (98.5 Lwa)	H: 26.5 in. (673 mm) H: 31.2 in. (792 mm) (to top of exhaust) W: 20.13 in. (511 mm) D: 37.06 in. (941 mm)	400 lb. (181 kg)
CV/DC	MIG/FCAW	15–40 V	325 A at 30.25 V, 100% duty cycle	<b>Continuous</b> 10,500 watts			
Battery charge/crank assist (optional)		12/24 V	Charge: 150 A Crank assist: 300 A	<b>Excel™ power (optional)</b> 2,400 watts, 20 A at 120 V, 60 Hz pure auxiliary power at idle speed and while welding			

\*Rated at sea level. \*\*Net weight without fuel.



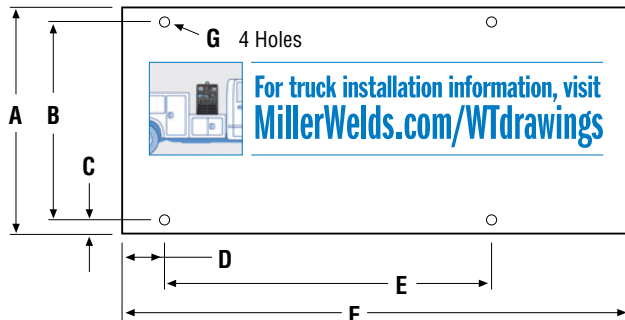
Certified by Canadian Standards Association to both the Canadian and U.S. Standards.

## Engine Specifications (Engines warranted separately by the engine manufacturer.)

Model	Engine Brand and Warranty	Horsepower (HP)	Type	Weld Speed	Idle Speed	Fuel Capacity	Oil Capacity	Standard Shutdowns
Trailblazer 330*	Kohler CH730, 3-year warranty	23.5 hp at 3,600 rpm	Twin-cylinder, four-cycle overhead valve, air-cooled industrial engine	Auto-Speed™ 2,400, 2,800, 3,200 or 3,600 rpm	2,400 rpm	11 gal. (41.6 L)	1.5 qt. (1.4 L)	Low oil pressure
Trailblazer 330 EFI*	Kohler ECH730, 3-year warranty	23 hp at 3,600 rpm						

\*Fuel stabilizer is recommended for gas engines that are used infrequently.

## Mounting Specifications

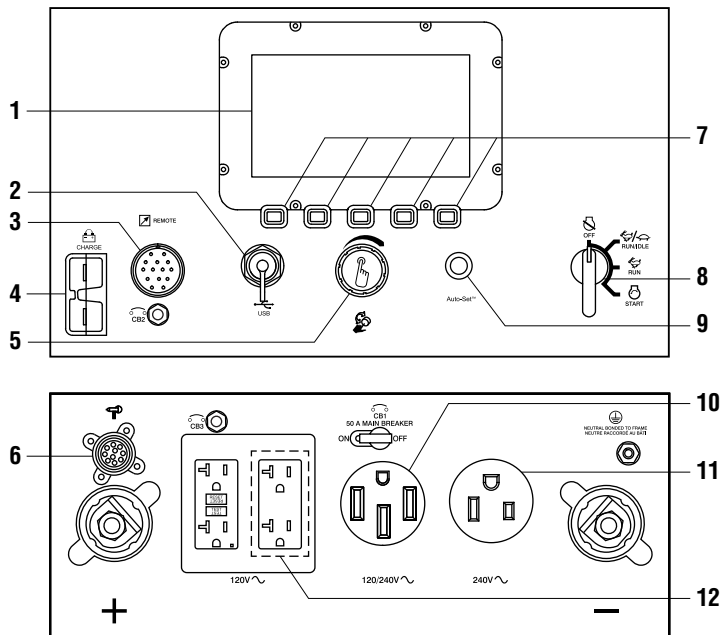


- A. 20 in. (508 mm)
- B. 16.5 in. (419 mm)
- C. 1.75 in. (44.5 mm)
- D. 3.18 in. (81 mm)
- E. 22.3 in. (566 mm)
- F. 37 in. (940 mm)
- G. .406 in. (10.3 mm) diameter

# Choose the Right Bobcat™ or Trailblazer® Engine Drive

Fuel System	Bobcat 230	UPGRADE	Bobcat 265	UPGRADE	Trailblazer 330
Fuel Type	Gasoline		Gasoline or LP		Gasoline
Delivery	Carburetor (manual choke)	➔	Carburetor (gas: eChoke™ / LP: manual choke)	➔	Carburetor (eChoke™) or EFI
<b>Weld</b>					
Output	DC only, CC/CV		DC only, CC/CV		DC only, CC/CV
Processes	Stick / MIG / FCAW	➔	Stick / TIG / MIG / FCAW / Gouge		Stick / TIG / MIG / FCAW / Gouge
Amperage Range	20–230 A	➔	20–265 A	➔	20–330 A
Voltage Range	14–25 V	➔	14–28 V	➔	15–40 V
<b>Auxiliary Power</b>					
Peak Watts	11,000 watts		11,000 watts	➔	12,000 watts
Continuous Watts	9,500 watts		9,500 watts	➔	10,500 watts
<b>Sound Levels</b>					
Maximum / At Idle	73.1 dB / 64 dB		73.1 dB / 64 dB		73.5 dB / 65 dB
<b>Dimensions</b>					
Size (H x W x D)	26.5 x 20.13 x 37.06 in.		26.5 x 20.13 x 37.06 in.		26.5 x 20.13 x 37.06 in.
Weight	376 lb.		382 lb.		400 lb.
<b>Key Features</b>					
Display	Knob	➔	LCD		LCD
Maintenance	Fuel / hour / oil	➔	Predictive maintenance		Predictive maintenance
Auto-Set™	—	➔	Yes		Yes
Battery Charge / Crank Assist	—	➔	150 A charge / 300 A crank (option)		150 A charge / 300 A crank (option)
ArcReach®	—	➔	Yes (option)	➔	Yes (standard)
Spool Gun	—	➔	Direct connect		Direct connect
Remote Start/Stop	—	➔	Yes	➔	Wireless interface control (option)

## Function and Benefit Guide



- Digital display** provides weld process and parameters, fuel level, maintenance and machine use information.
- USB port** allows software updates from a USB drive. A summary file of recorded data from the unit will be saved to a USB drive that is inserted.
- Standard 14-pin receptacle** for simple connection of remote controls and wire feeders. Includes **Auto Remote Sense™** which automatically switches from panel to remote amperage/voltage (A/V) control with remote connected. Eliminates confusion of a panel/remote switch.
- Optional battery charge/crank assist receptacle.**
- Pushbutton main control knob** used for adjusting amperage/voltage and accessing the service menu.
- Standard 10-pin receptacle** for simple connection of spool guns. See page 7.
- Pushbuttons** used for selection of weld process, menu and other machine features.
- Engine control switch** is used to start the engine and then select between auto idle and high speed lock positions.
- Auto-Set™ button** provides process-specific pre-defined parameters.
- 120/240 V receptacle with circuit breaker.**  
(For matching plug, order **119172**.)
- 240 V receptacle with circuit breaker.**
- Optional Excel™ power (factory option, see page 8)** provides pure auxiliary power at idle speed and while welding.  
*Note: If Trailblazer is ordered without Excel power option, unit is shipped with two 20 A, 120 V duplex receptacles with circuit breakers and ground fault.*

## Genuine Miller® Options \*Factory installed on all EFI models. See ordering information on back page.

**Electric Fuel Pump\* 301741** Field  
Recommended for gas engine operations at altitudes above 5,000 feet. Improves engine starting and high-output performance.

**Spark Arrestor 300924** Field  
Mandatory when operating on California grasslands, brush or forest-covered land, and all national forests. For other areas, check your state and local laws.



Female Receptacle



**Full KVA Adapter Cord 300517** Field  
NEMA 14-50P to NEMA 6-50R. Adapts engine drive 120/240 V plug to common Millermatic® and Spectrum® 240 V plug.



**Full KVA Plug 119172** Field  
120/240 V, 50 A plug (NEMA 14-50P) to fit full KVA receptacle.

### Engine Tune-Up Kits

**284083** Field. Kohler CH730 (carb)

**246115** Field. Kohler ECH730 (EFI)

Includes air and fuel filters, and two spark plugs.

## Genuine Miller® Accessories



### Never Flat™ Tires

Available on Bobcat and Trailblazer running gear.

- Reduce costly jobsite downtime
- Maintain constant tire pressure and will not develop flats
- Protect against punctures
- Preserve maneuverability, even when weighed down with heavy welding cable



### Off-Road Running Gear with Never Flat Tires 301706

Includes four heavy-duty 15-inch tires and a rugged handle to provide maximum maneuverability.



### Off-Road Running Gear with Protective Cage and Never Flat Tires 301707

Running gear allows easy movement around jobsite and rugged cage with cable holders protects your investment.



### Multi-Terrain Running Gear with Never Flat Tires 301708

Includes two heavy-duty 15-inch tires, two 8-inch rubber swivel casters and a heavy-duty handle. Recommended for all surfaces and applications, and is easy to move around the jobsite.



### Protective Cage with Cable Holders 301709

Rugged cage with cable holders protects your investment. Can be used with running gear, gas cylinder mounting assembly, or trailer.



### Gas Cylinder Mounting Assembly 301711

Designed for use with multi-terrain running gear, protective cage, or by itself. Includes base tray with bottle bracket, vertical support rack and safety chain.  
*Note: Not recommended for use with protective cover.*



### 25-foot Battery Charge/Jump Cables with Plug 300422



### Protective Covers 301712

For use **without** protective cage or running gear (shown) 301713

For use **with** protective cage and/or running gear

Heavy-duty, water- and mildew-resistant covers protect and maintain the finish of the welder.



### Wireless Interface Control Replacement Kit 288137

Field Replacement kit for wireless interface control machines. NOT compatible with machines that are not equipped with

wireless interface control. Includes replacement remote, magnetic lanyard, USB charger, 110-volt adapter, and two screen protectors.

### Wireless Interface Control Protective Covers 287594

Five-pack of screen protectors for wireless interface control remote.

## MIG/Flux-cored Welding



### Millermatic® 142 907838

See literature DC/12.41

### Millermatic® 211 907614

See literature DC/12.58

The Millermatic line of MIG welders are complete arc welding power source, wire feeder and gun packages designed for portability and ease of use.

*Note: The Millermatic machines can be operated utilizing auxiliary power.*

## MIG/Flux-cored Welding (cont.)



### ArcReach® SuitCase® 8

**951726001** With Bernard® BTB Gun 300 A  
**951727** With Bernard® S-Gun™  
**951728** With Bernard® Dura-Flux™ gun

### ArcReach® SuitCase® 12

**951729001** With Bernard® BTB Gun 300 A  
**951730** With Bernard® S-Gun™  
**951731** With Bernard® Dura-Flux™ gun

Portable feeder designed to run off of arc voltage. See literature M/6.55.



### SuitCase® 12RC

#### Wire Feeder 951580001

Lightweight and flexible enough to run wires up to .062-inch diameter. Includes remote voltage control, drive roll kit and Bernard® BTB Gun 300 A. See literature M/6.5.



### Spoolmatic® 30A

#### Spool Gun 130831

Rated at 200 amps, 100 percent duty cycle with 30-foot (9 m) cable. See literature M/1.73.



### Spoolmate™ 200

#### Spool Gun 300497

Rated at 160 amps, 60 percent duty cycle with 20-foot (6 m) cable. See literature M/1.47.

### XR™ Wire Feeder and Guns

Push-pull system designed to handle difficult-to-feed soft alloy wires such as aluminum. See literature DC/34.0 and M/1.71 through M/1.74.

## Stick (SMAW) Welding

### Weld Leads

#### 2/0 Stick Cable Set, 50 ft. (15 m) 173851

Consists of 50-foot (15 m) 2/0 electrode cable with holder, and 50-foot (15 m) work cable with clamp. 350 A, 100% duty cycle.

#### 2/0 Stick Cable Set, 100/50 ft. (30.5/15 m) 043952

Consists of 100-foot (30.5 m) 2/0 electrode cable with holder, and 50-foot (15 m) work cable with clamp. 300 A, 100% duty cycle.

## TIG (GTAW) Welding



### Dynasty® 210 Series

For portable AC/DC TIG. See literature AD/4.81.

## Multiprocess Welding



### Multimatic® 215 907693

Portable, all-in-one multiprocess package weighs only 38 pounds (17.2 kg), and features excellent arc characteristics. Exclusive multi-voltage plug (MVP™) provides flexibility to plug into 120- or 240-volt power. Take it anywhere you need to MIG, TIG or stick weld. See literature DC/12.59.

## Remote Solutions



### ArcReach® Stick/TIG Remote 301325

When paired with an ArcReach power source, provides remote control of the power source without a control cord — saving time

and money. See literature AY/14.5.



### Wireless Remote Hand Control 301582

For remote current, voltage and contactor control. Receiver plugs directly into the 14-pin receptacle of Miller machine. Up to 300-foot (91.4 m) operating range.



### RHC-14 Hand Control 242211020

Miniature hand control for remote current and contactor control. Dimensions: 4 x 4 x 3.25 inches (102 x 102 x 82 mm). Includes 20-foot (6 m) cord and 14-pin plug.



### PRHC-14 Hand Control 195511

Complete current or voltage control brings 120 volts GFCI power to work area in a single cord. Housed in a durable, light aluminum case and includes 125-foot (38 m) cord with plugs.

## Extension Cables for 14-Pin Remote Controls

**242208025** 25 ft. (7.6 m)  
**242208050** 50 ft. (15.2 m)  
**242208080** 80 ft. (24.4 m)

## Remote Output Panel Kit 951850

If your engine-driven welder is mounted on a truck, easily locate the outputs at the point of use with the auxiliary power and weld output remote panel. See literature AY/20.5.

## Plasma Cutting



*Spectrum 375 X-TREME and 625 X-TREME shown.*

### Spectrum® 375 X-TREME™ 907529

See literature PC/9.2.

### Spectrum® 625 X-TREME™ 907579

See literature PC/9.6.

### Spectrum® 875 907583

See literature PC/9.8.

The Spectrum 375 X-TREME and 625 X-TREME come complete with protective X-CASE™ (not shown).

## Trailers and Hitches



### HWY-Mid Frame Trailer 301438

1,424-pound (646 kg) capacity

highway trailer with welded steel tubing frame, heavy-duty axle with roller bearing hubs and leaf-spring suspension. Includes jack stand, fenders, lights, and dual hitch with 2-inch (50 mm) ball hitch and 3-inch (76 mm) lunette eye.

*Note: Trailer is shipped unassembled.*



### Cable Tree 043826

Provides an area to conveniently wrap weld cables and extension cords.



### 2-In-1 Document/Fire Extinguisher Holder 301236

Stores documents and holds a five-pound fire extinguisher.

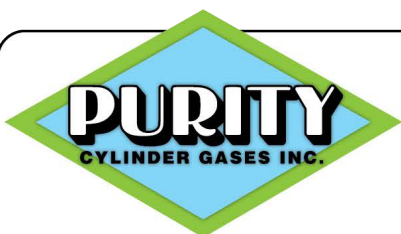
*Note: Holder shown mounted on trailer. Fire extinguisher not included.*

# Ordering Information

Equipment and Options	Stock No.	Description	Qty.	Price
<b>Trailblazer® 330</b> (Kohler engine)	<b>907831</b>	Base model		
	<b>907831001</b>	With Excel™ power		
<b>Trailblazer® 330 EFI</b> (Kohler engine)	<b>907832</b>	Base model		
	<b>907832001</b>	With Excel™ power		
	<b>907832002</b>	With Excel™ power and wireless interface control		
	<b>907832003</b>	With Excel™ power and battery charge/crank assist		
	<b>907832004</b>	With Excel™ power, battery charge/crank assist and wireless interface control		
	<b>907832005</b> <b>907832006</b>	With Excel™ power and polarity reversing With Excel™ power, polarity reversing and wireless remote control		
<b>Field Options</b> <i>Options listed below can be added to the above packages. Installation is required.</i>				
Electric Fuel Pump	<b>301741</b>	Recommended for gas engine operations at altitudes above 5,000 feet		
Spark Arrestor	<b>300924</b>			
Full KVA Adapter Cord	<b>300517</b>			
Full KVA Plug	<b>119172</b>			
Engine Tune-Up Kits	<b>284083</b> <b>246115</b>	For Kohler CH730 (carb). Includes air and fuel filters, and two spark plugs For Kohler ECH730 (EFI). Includes air and fuel filters, and two spark plugs		
<b>Accessories</b>				
Off-Road Running Gear	<b>301706</b>	With Never Flat™ tires		
Off-Road Running Gear with Protective Cage	<b>301707</b>	With Never Flat™ tires		
Multi-Terrain Running Gear	<b>301708</b>	With Never Flat™ tires		
Protective Cage with Cable Holders	<b>301709</b>			
Gas Cylinder Mounting Assembly	<b>301711</b>	<i>Not recommended for use with protective cover</i>		
25-foot Battery Charge/Jump Cables w/Plug	<b>300422</b>			
Protective Covers	<b>301712</b>	For use <b>without</b> protective cage or running gear		
	<b>301713</b>	For use <b>with</b> protective cage and/or running gear		
Wireless Interface Control Replacement Kit	<b>288137</b>	Includes replacement remote, magnetic lanyard, USB charger, 110-volt adapter, and two screen protectors		
Wireless Interface Control Protective Covers	<b>287594</b>	Five-pack of screen protectors for wireless interface control remote		
<b>MIG/Flux-cored Welding</b>				
Millermatic® Series MIG Welders		See page 6		
Wire Feeders		See page 7		
Spool Guns		See page 7		
XR™ Wire Feeder and Guns		See literature DC/34.0 and M/1.71 through M/1.74		
<b>Stick Welding</b>				
		See page 7		
<b>TIG Welding</b>				
		See page 7		
<b>Multiprocess Welding</b>				
		See page 7		
<b>Remote Solutions/Extension Cables</b>				
		See page 7		
<b>Plasma Cutting</b>				
		See page 7		
<b>Trailers and Hitches</b>				
HWY-Mid Frame Trailer	<b>301438</b>	Trailer with lights, fenders and dual hitch. For highway use		
Cable Tree	<b>043826</b>	Trailer-mounted cable holder		
2-In-1 Document/Fire Extinguisher Holder	<b>301236</b>	Stores documents and holds a five-pound fire extinguisher		

Date:

Total Quoted Price:



**Grand Rapids**  
(616) 532-2375 1-888-532-2375

**Angola, IN**  
(260) 665-7241

**Battle Creek, MI**  
(269) 660-1907

**Cadillac, MI**  
(231) 779-2468

**Elkhart, IN**  
(574) 389-8760

**Fort Wayne, IN**  
(260) 497-7565

**Gaylord, MI**  
(989) 731-1111

**Holland, MI**  
(616) 848-7650

**Kalamazoo, MI**  
(269) 344-0518

**Lansing, MI**  
(517) 321-9555

**Mt. Pleasant, MI**  
(989) 775-0898

**Muskegon, MI**  
(231) 773-2510

**Pierceton, IN**  
(574) 594-2551

**Saginaw, MI**  
(989) 755-4344

**Traverse City, MI**  
(231) 922-0851

**Warsaw, IN**  
(574) 267-6066

**Wixom, MI**  
(248) 230-8468

**Family Owned & Locally Operated Since 1938**



[puritygas.com](http://puritygas.com)