

01-'23

03/01/2023 thru 05/31/2023

# siegmund

WELDING TABLES AND FIXTURES - IMPERIAL SERIES

**PURITY**  
CYLINDER GASES INC.

**WORLD'S  
STRONGEST  
WELDING TABLES**

>> CHECK OUT PAGE 10

siegmund

# QUALITY ABOVE THE REST, DELIVERED BY SIEGMUND'S OFFICIAL HEAD USA IMPORTER

Siegmund® is the world leader in the manufacturing of precision Welding Tables and Fixturing Accessories. Together with Quantum Machinery Group, we want to provide the best service for our customers nationwide. As the official USA Importer of Siegmund® Welding Tables and Fixtures, Quantum Machinery has opened a BRAND NEW Facility in Charlotte, North Carolina (USA).



## Extremely Fast Shipping

With Thousands of Siegmund® Welding Tables and Accessories In-Stock, you can get your new Siegmund® Welding Tables and Accessories when you want it and when you need it.



## Showroom and Stock

- Over 20,000 sqft. Siegmund® display showroom in Charlotte, North Carolina (USA)
- 38,000 sqft. of warehouse stocking space
- With approximately 1,500 Siegmund® welding and clamping tables and over 100,000 tools and accessories, we can accommodate just about every request

## Award-Winning Support

Our team is here for you from 7:30 a.m. to 5:00 p.m. EST Whether you need welding table advice or if you need a quote.

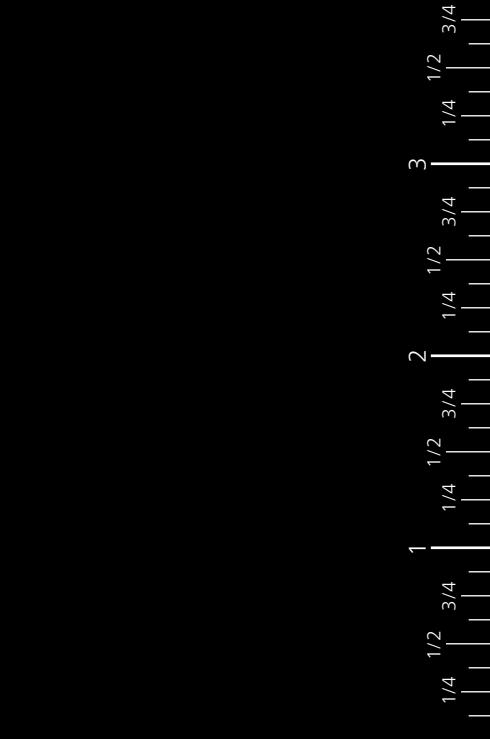
Contact us at:

**(888) 532-2375**

or stop by a store near you!



[www.puritygas.com](http://www.puritygas.com)



# New products and offers

## The new Siegmund bench vice (page 6/7)

high quality manufactured



## 20" G Square (page 8/9)

Three-dimensional clamping



### Siegmund® Headquarters Germany

- Largest manufacturer of welding tables with a dealer network in more than 50 countries
- Large team of developers and on-going contact with our customers

**Meet us  
at these  
trade shows  
2023**

Eastec in West Springfield, MA  
**May 16-18, 2023**



Fabtech in Chicago, IL  
**September 11-14, 2023**



Southtec in Greenville, SC  
**October 24-26, 2023**



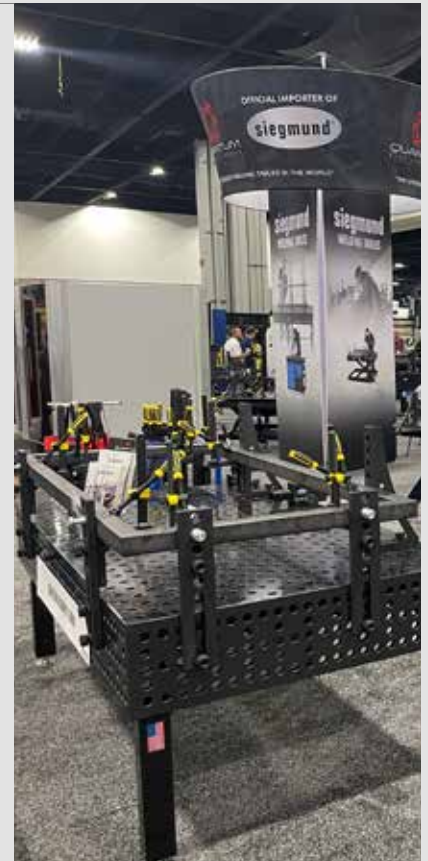
Sema Show in Las Vegas, NV  
**October 31 - November 3, 2023**



Westec in Long Beach, CA  
**November 7-9, 2023**



PRI in Indianapolis, IN  
**December 7-9, 2023**



# Choose your welding table

The right working basis for every application

## System 28 BASIC

Imperial Series

### Material

- **Basic 8.7:**  
Through-hardened tool steel X8.7 + Plasma nitration
- Material thickness approx. 15/16" – 1-1/16"
- Basic hardness approx. **280 – 340 Vickers**
- Surface hardness approx. **450 – 850 Vickers**



### Details

- Borehole Ø 28 mm (1-1/10")
- Boreholes on the surface in diagonal grid
- Corners and edges rounded
- M12-thread on 4 sides every 8"
- 5/16"x45° chamfer for table leg mounting



## System 28 EXTREME 8.7

Imperial Series

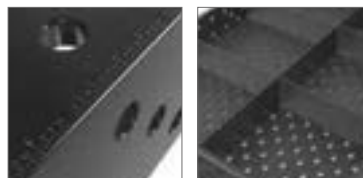
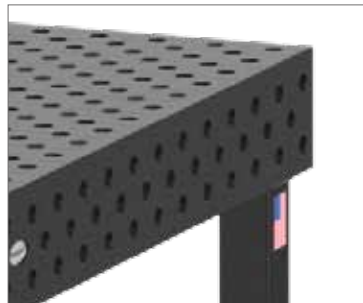
### Material

- **Professional Extreme 8.7:**  
Through-hardened tool steel X8.7 + Plasma nitration
- Material thickness approx. 15/16" – 1-1/16"
- Table side panel made of high quality steel S355J2+N + Plasma nitration
- Basic hardness approx. **280 – 340 Vickers**
- Surface hardness approx. **450 – 850 Vickers**



### Details

- Borehole Ø 28 mm (1-1/10")
- Boreholes on the surface in diagonal grid
- Corners, edges and boreholes rounded
- Height of table side 7-7/8"
- Boreholes on table sides in diagonal grid
- With inch scaling on the surface
- Construction reinforced with ribbing



## System 28 EXTREME 8.8 PLUS

Imperial Series

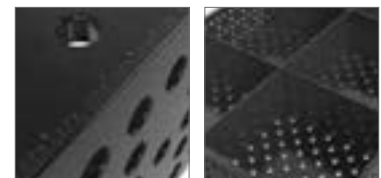
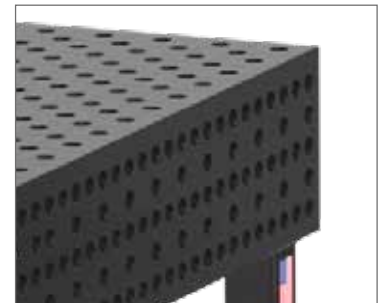
### Material

- **Professional Extreme 8.8 PLUS:**  
Through-hardened tool steel X8.8 + Plasma nitration
- Material thickness approx. 15/16" – 1-1/16"
- Table side panel made of high quality steel S355J2+N + Plasma nitration
- Basic hardness approx. **360 – 420 Vickers**
- Surface hardness approx. **500 – 900 Vickers**



### Details

- Borehole Ø 28 mm (1-1/10")
- Boreholes on the surface in diagonal grid
- Corners, edges and boreholes rounded
- Height of table side 11-3/4"
- Boreholes on table side 3 rows with 2" spacing, 2 rows with 4" spacing
- With inch scaling on the surface
- Construction reinforced with ribbing





## System 16 EXTREME 8.7 Imperial Series

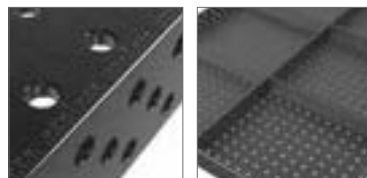
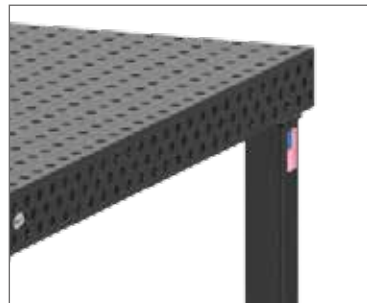
### Material

- **Professional Extreme 8.7:**  
Through-hardened tool steel X8.7 + Plasma nitration
- Material thickness approx. 7/16" – 1/2"
- Table side panel made of high quality steel S355J2+N + Plasma nitration
- Basic hardness approx. **280 – 340 Vickers**
- Surface hardness approx. **450 – 850 Vickers**



### Details

- **Borehole Ø 16 mm (5/8")**
- Boreholes on the surface 2" x 2" grid
- Corners, edges and boreholes rounded
- Height of table side 3-15/16"
- Boreholes on table sides in diagonal grid
- With inch scaling on the surface
- Construction reinforced with ribbing



## System 16 EXTREME 8.7 PLUS Imperial Series

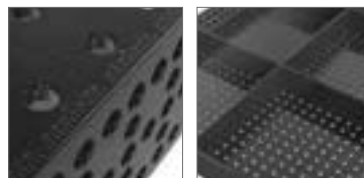
### Material

- **Professional Extreme 8.7 PLUS:**  
Through-hardened tool steel X8.7 + Plasma nitration
- Material thickness approx. 7/16" – 1/2"
- Table side panel made of high quality steel S355J2+N + Plasma nitration
- Basic hardness approx. **280 – 340 Vickers**
- Surface hardness approx. **450 – 850 Vickers**



### Details

- **Borehole Ø 16 mm (5/8")**
- Boreholes on the surface 2" x 2" grid
- Corners, edges and boreholes rounded
- Height of table side 5-7/8"
- Boreholes on table side 3 rows with 1" spacing, 2 rows with 2" spacing
- With inch scaling on the surface
- Construction reinforced with ribbing



➤ *Siegmund's unique and specially developed materials and processes provide features not generally offered by other producers.*

*Thanks to the sophisticated modular system of Siegmund, all systems can be connected by using connecting elements.*

*Your advantage with a Siegmund welding and clamping table:*

- + Short set-up time / Time efficient
- + Rapid tooling changes
- + No welding distortion
- + 100% repeatability
- + Easy clamping in every spot
- + Significantly less rework
- + Highly resilient
- + Same basis for every project
- + Low error rate



# The high-quality manufactured bench vice

## Bench vice 5-7/8" – Reliable and long-lasting

➤ A basic, essential piece of equipment in every workshop is a reliable bench vice. Our new high quality Siegmund bench vice offers improved productivity and reliability.

**NEW**



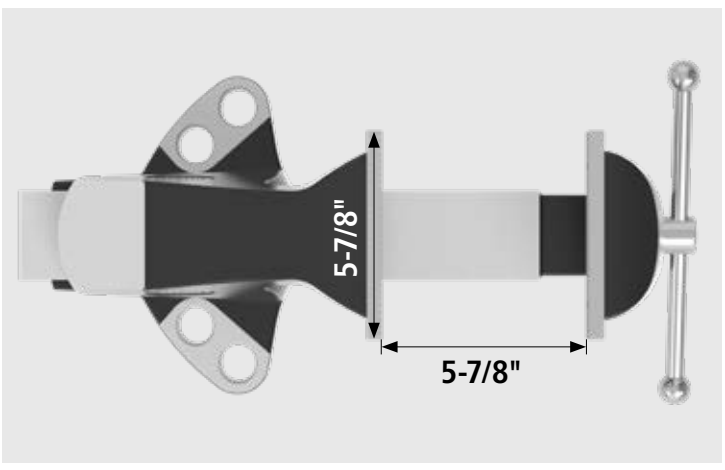
Explore the new high-quality bench vice from Siegmund.

The universal bench vice can be attached to the table at a 45° or 90° angle. To mount the bench vice, fast clamping bolts and if necessary, reduction bushings are required.

The movable part is machined on 4 sides to ensure smooth sliding and precise clamping. The bench vice is compatible with the imperial and metric system.



<b>US004330</b>	<b>Bench vice 5-7/8" for System 28 - with 1-1/10" boreholes</b>	<b>\$497</b>
Jaw width 5-7/8", Opening stroke 5-7/8", Mounting: System 16: 2x US160511 + 2x US000546, System 28: 2x US280511		
Weight: 55 lbs		



siegmund

# PURITY

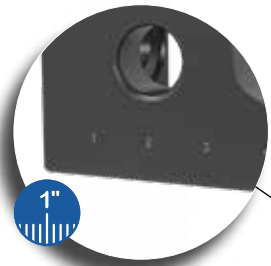
CYLINDER GASES INC.



# 20" G Square

Open up the world of three-dimensional clamping

Stop and Clamping Square 20" G, can be fixed and variably adjusted due to the combination of system boreholes and the elongated hole. The versatile Square can also be used as table extension.



**incl. INCH scale**

20" G Squares have scales to enable accurate positioning.



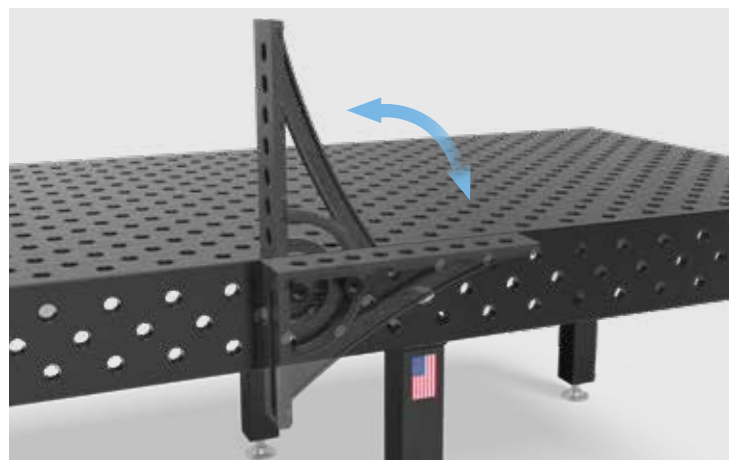
## Front side and bottom

The front side of the square is a stable clamping surface with a variety of options. In combination with stops and squares with elongated holes the height can be adjusted flexibly. Thanks to the elongated holes on the bottom the square can be positioned accurate to the millimeter on the table or as table extension on the table side panel.

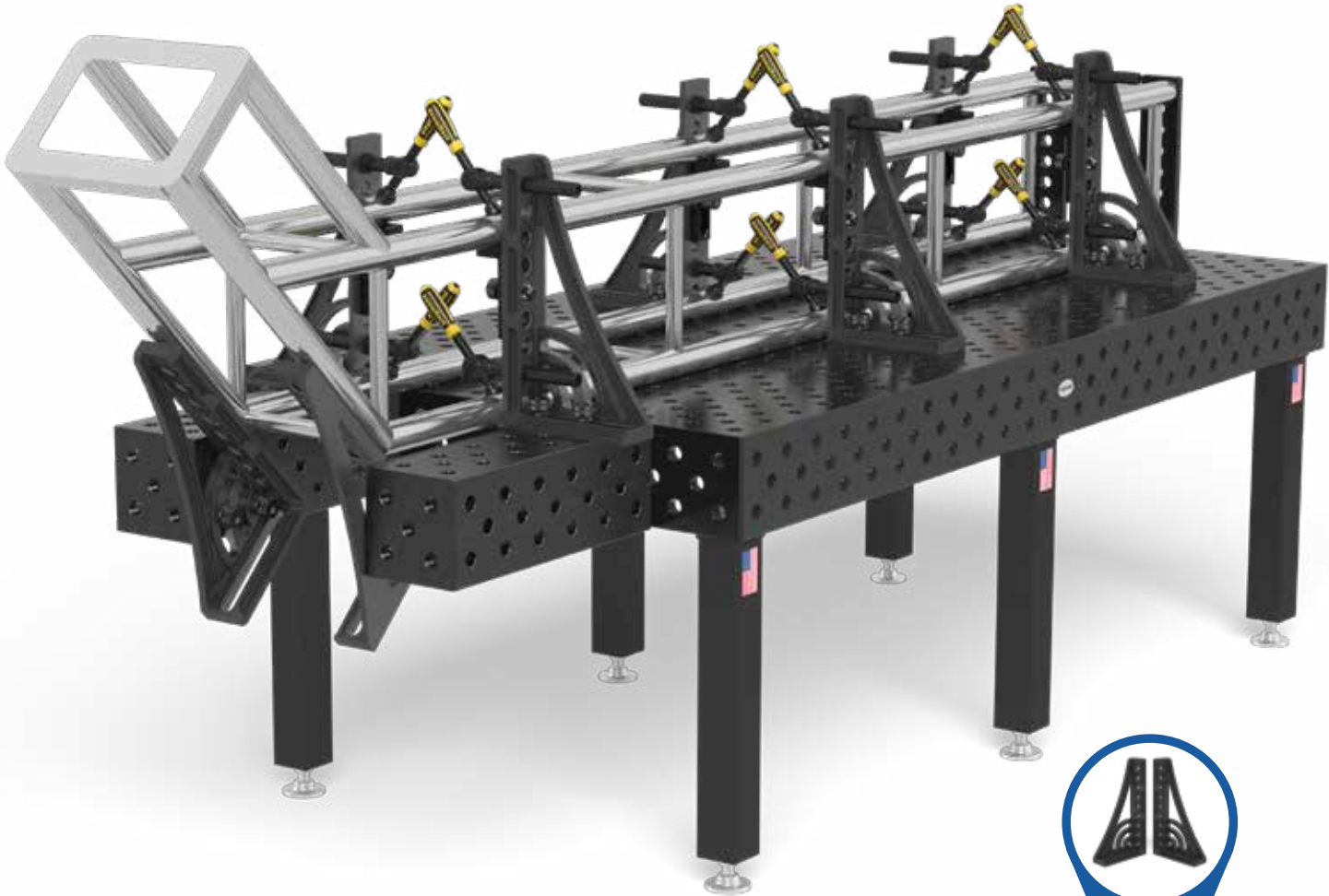


## Stop side with rotation angle

With the help of the adjustment angle on the side, you can clamp your workpieces precisely and highly variable in three dimensions.







<b>US280164.N</b>	<b>Stop and Clamping Square 20" G with rotation angle left - nitrided</b>	<b>\$438</b>
	usable as table extension, material: GGG40, recommended as a pair	
Length: (a)	Width: (b)	Height: (c)
10-7/8"	3-3/4"	19-3/4"
MS: (d)	Weight:	
1"	25 lbs	
<b>US280165.N</b>	<b>Stop and Clamping Square 20" G with rotation angle right - nitrided</b>	<b>\$438</b>
	usable as table extension, material: GGG40, recommended as a pair	
Length: (a)	Width: (b)	Height: (c)
10-7/8"	3-3/4"	19-3/4"
MS: (d)	Weight:	
1"	25 lbs	

MS=Material thickness



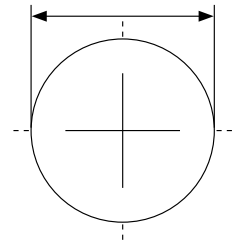
# Welding Tables

For heavy-duty applications

## System 28 Extreme 8.8 PLUS – Imperial Series

System 28 (1-1/10" = 28 mm)

Borehole Ø 1-1/10"  
 Boreholes on the surface in diagonal grid  
 Height of table side 11-3/4"  
 Boreholes on table side 3 rows with 2" spacing  
 2 rows with 4" spacing  
 Material thickness approx. 15/16" – 1-1/16"  
 Grid dimension 4" x 4"



Tables	4' x 8' (48" x 96")	5' x 10' (60" x 120")
Item No.	US280030.XD8PL	US280040.XD8PL
Weight	approx. 2,534 lbs	approx. 3,758 lbs
Legs	6	6
<b>PRICE</b>	<b>\$12,920</b>	<b>\$18,025</b>

Maximum recommended static total load with 6 legs 19,800 lbs based on even load distribution. (Data only for leg standard equipment)



Table Legs	Item No.	US280853.X	US280858.X	US280877.XX	US280860.XX <sup>1</sup>	US280879.XX <sup>1</sup>
Capacity per table leg		6,600 lbs	4,400 lbs	4,400 lbs	<b>1,760 lbs</b>	<b>1,760 lbs</b>
Leg height		24"	28"	22" – 36"	24"	22" – 30"
Table height		36"	40"	34" – 48"	36"	34" – 42"
Fine adjustment		2"	2"	2"	13/16"	13/16"
<b>Surcharge per leg</b>		<b>included</b>	<b>alternatively</b>	<b>\$127</b>	<b>\$157</b>	<b>\$207</b>

### Accessories-Set US283999

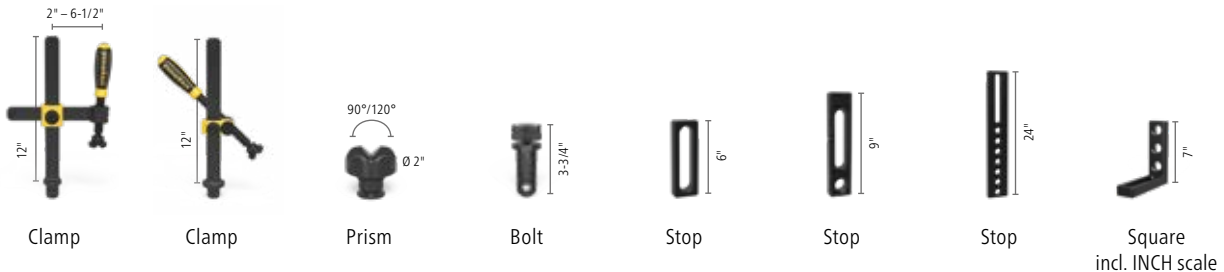
(Included at no extra cost in all sets)

- US280402.N Eccentric Stop
- US280852.1 Hex wrench
- US280820 Brush
- US000914 CleanBasic
- US000924 Anti-Spatter
- US280920 Burner Holder



Value: \$191

<sup>1</sup> Note castor: Not recommended for the 5' x 10' welding table. In order to use castors on a 4' x 8' welding table, you will need to use a 4 leg (instead of 6 leg) with castors configuration.



Sets	Clamp	Clamp	Prism	Bolt	Stop	Stop	Stop	Square incl. INCH scale
Material	nitrided	nitrided	burnished	burnished	nitrided	nitrided	nitrided	nitrided
Item No.	US280610.N	US280630.N	US280645.1	US280511	US280410.N	US280420.N	US280430.N	US280110.N
<b>Set 1:</b> US283100	4 x			8 x	2 x	4 x		2 x
<b>Set 2:</b> US283200	6 x	2 x	4 x	12 x	4 x	6 x	2 x	4 x
<b>Set 3:</b> US283300	8 x	4 x	4 x	16 x	4 x	6 x	2 x	4 x
<b>Set 4:</b> US283400	10 x	6 x	6 x	20 x	6 x	8 x	4 x	6 x
<b>Set 5:</b> US283500	12 x	12 x	8 x	30 x	8 x	8 x	4 x	10 x

Weights of the sets: Set 1 = approx. 66 lbs., Set 2 = approx. 226 lbs., Set 3 = approx. 482 lbs., Set 4 = approx. 642 lbs., Set 5 = approx. 836 lbs.  
 Prices quoted in U.S.D., excl. sales taxes, packing and transport costs.

## Limited Time Offer

### Welding Table inclusive bundle

#### System 28 PLUS – Imperial Series Siegmund® Welding Table Professional Extreme 8.8 PLUS 4' x 8' Bundle

- ✓ Hardened tool steel X8.8, plasma nitrided and BAR-coated
- ✓ Borehole Ø 1-1/10"
- ✓ INCH scale engraved on the surface
- ✓ Boreholes in diagonal grid
- ✓ Weight approx. 2,534 lbs


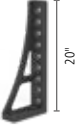
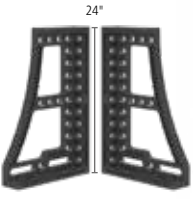
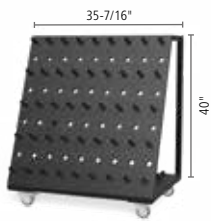


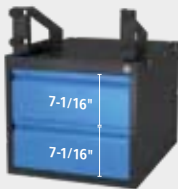
was \$18,139  
Item No. US288330.XD8PL

# \$16,159

		
<b>5x</b>	<b>5x</b>	<b>4x</b>
US280610.N	US280630.N	US280511
		
<b>4x</b>	<b>4x</b>	<b>1x + 1x</b>
US280516	US280420.N	US280134+36.N
		
<b>1x</b>	<b>1x</b>	<b>6 pieces</b>
US004330	US280910	US283999

Total weight of this offer (Welding table incl. Bundle) approx. 2,901 lbs.

			
Square incl. INCH scale	Square incl. INCH scale	Square incl. INCH scale	Tool Cart
nitrided	nitrided	nitrided	powder coated finish
US280152.N	US280162.N	US280134+36.N	US280910
			<b>\$1,889</b>
2 x	2 x		<b>\$4,539</b>
2 x	2 x	1 x + 1 x	1 x
4 x	4 x	1 x + 1 x	1 x
4 x	4 x	2 x + 2 x	1 x
			<b>\$13,169</b>



**Sub Table Box**

inclusive 2 drawers with suitable mounting.  
Max. load capacity per drawer approx. 110 lbs.  
Drawer pull-out length 15-3/4"

**\$788**  
Item No. US280990.1

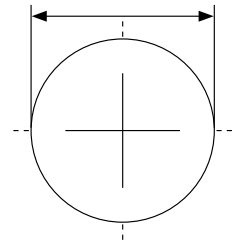


# Welding Tables

For heavy-duty applications

System 28 (1-1/10" = 28 mm)

Borehole Ø 1-1/10"  
Boreholes in diagonal grid  
Height of table side 7-7/8"  
Material thickness approx. 15/16" – 1-1/16"  
Grid dimension 4" x 4"



## System 28 Extreme 8.7 – Imperial Series



Tables	4' x 5' (48" x 60")	4' x 8' (48" x 96")	5' x 5' (60" x 60")	5' x 10' (60" x 120")
Item No.	US280035.XD7	US280030.XD7	US280050.XD7	US280040.XD7
Weight	approx. 1,441 lbs	approx. 2,217 lbs	approx. 1,754 lbs	approx. 3,277 lbs
Legs	4	6	4	6
<b>PRICE</b>	<b>\$6,475</b>	<b>\$9,925</b>	<b>\$7,895</b>	<b>\$13,670</b>

Maximum recommended static total load with 4 legs 8,800 lbs based on even load distribution. (Data only for leg standard equipment)



### Table Legs

Item No.	US280858.X	US280877.XX	US280876.XX <sup>1</sup>	US280879.XX <sup>1</sup>
Capacity per table leg	4,400 lbs	4,400 lbs	<b>1,760 lbs</b>	<b>1,760 lbs</b>
Leg height	28"	22" – 36"	28"	22" – 30"
Table height	36"	30" – 44"	36"	30" – 38"
Fine adjustment	2"	2"	13/16"	13/16"
<b>Surcharge per leg</b>	<b>included</b>	<b>\$127</b>	<b>\$160</b>	<b>\$207</b>

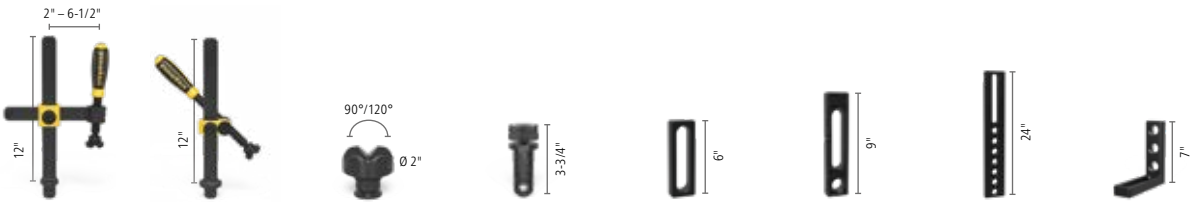
### Accessories-Set US283999 (Included at no extra cost in all sets)

- US280402.N Eccentric Stop
- US280852.1 Hex wrench
- US280820 Brush
- US000914 CleanBasic
- US000924 Anti-Spatter
- US280920 Burner Holder



**Value: \$191**

<sup>1</sup>Note castor: Not recommended for the 5' x 10' welding table. In order to use castors on a 4' x 8' welding table, you will need to use a 4 leg (instead of 6 leg) with castors configuration.



Sets	Clamp	Clamp	Prism	Bolt	Stop	Stop	Stop	Square incl. INCH scale
Material	nitrided	nitrided	burnished	burnished	nitrided	nitrided	nitrided	nitrided
Item No.	US280610.N	US280630.N	US280645.1	US280511	US280410.N	US280420.N	US280430.N	US280110.N
<b>Set 1:</b> US283100	4 x			8 x	2 x	4 x		2 x
<b>Set 2:</b> US283200	6 x	2 x	4 x	12 x	4 x	6 x	2 x	4 x
<b>Set 3:</b> US283300	8 x	4 x	4 x	16 x	4 x	6 x	2 x	4 x
<b>Set 4:</b> US283400	10 x	6 x	6 x	20 x	6 x	8 x	4 x	6 x
<b>Set 5:</b> US283500	12 x	12 x	8 x	30 x	8 x	8 x	4 x	10 x

Weights of the sets: Set 1 = approx. 66 lbs., Set 2 = approx. 226 lbs., Set 3 = approx. 482 lbs., Set 4 = approx. 642 lbs., Set 5 = approx. 836 lbs.

Prices quoted in U.S.D., excl. sales taxes, packing and transport costs.

## Limited Time Offer

### Welding Table inclusive bundle

#### System 28 – Imperial Series Siegmund® Welding Table Professional Extreme 8.7 5' x 10' Bundle

- ✓ Hardened tool steel X8.7, plasma nitrided and BAR-coated
- ✓ Borehole Ø 1-1/10"
- ✓ INCH scale engraved on the surface
- ✓ Boreholes in diagonal grid
- ✓ Weight approx. 3,277 lbs



<b>5x</b>	<b>5x</b>	<b>4x</b>
US280610.N	US280630.N	US280511



<b>4x</b>	<b>4x</b>	<b>1x+1x</b>
US280516	US280420.N	US280164+65.N



<b>1x + 1x</b>	<b>1x</b>	<b>6 pieces</b>
US280134+36.N	US280910	US283999



was \$19,268  
Item No. US288040.XD7

# \$17,169

Total weight of this offer (Welding table incl. Bundle) approx. 3,649 lbs.

Square incl. INCH scale	Square incl. INCH scale	Square incl. INCH scale	Tool Cart	
nitrided	nitrided	nitrided	powder coated finish	
US280152.N	US280162.N	US280134+36.N	US280910	<b>\$1,889</b>
2 x	2 x			<b>\$4,539</b>
2 x	2 x	1 x + 1 x	1 x	<b>\$7,290</b>
4 x	4 x	1 x + 1 x	1 x	<b>\$9,849</b>
4 x	4 x	2 x + 2 x	1 x	<b>\$13,169</b>

**Sub Table Box**

inclusive 2 drawers with suitable mounting.  
Max. load capacity per drawer approx. 110 lbs.  
Drawer pull-out length 15-3/4"

**\$788**  
Item No. US280990.1

**NEW**

**High-quality manufactured bench vice**

Explore the new bench vice 5-7/8" from Siegmund. It is a high-quality manufactured product, machined on 4 sides to ensure smooth sliding and precise clamping.

**\$497**  
Item No. US004330

# Welding Tables

The economical solution

System 28 (1-1/10" = 28 mm)

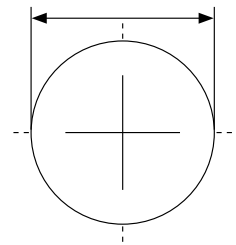
Borehole Ø 1-1/10"

Boreholes in diagonal grid

M12-thread on 4 sides every 8"

Thickness of table plate approx. 15/16" – 1-1/16"

Grid dimension 4" x 4"



## System 28 Basic – Imperial Series



Tables	4' x 4' (48" x 48")	4' x 8' (48" x 96")	5' x 10' (60" x 120")
Item No.	US281015.XD7	US281030.XD7	US281040.XD7
Weight	approx. 788 lbs	approx. 1,442 lbs	approx. 2,152 lbs
Legs	4	6	6
<b>PRICE</b>	<b>\$2,990</b>	<b>\$5,690</b>	<b>\$7,805</b>

Maximum recommended static total load with 4 legs 4,400 lbs based on even load distribution. (Data only for leg standard equipment)



### Table Legs

Item No.	US161856	US160877.XX	US161855.XX <sup>1</sup>	US160879.XX <sup>1</sup>
Capacity per table leg	2,200 lbs	2,200 lbs	<b>440 lbs</b>	<b>440 lbs</b>
Leg height	35"	22" – 38"	35"	24" – 36"
Table height	36"	23" – 39"	36"	25" – 37"
Fine adjustment	1-5/16"	1-5/8"	1-3/16"	1-3/16"
<b>Surcharge per leg</b>	<b>included</b>	<b>\$87</b>	<b>\$98</b>	<b>\$146</b>

<sup>1</sup>Note castor: Not recommended for welding tables with 6 table legs.

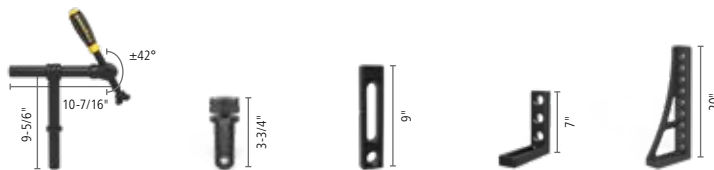
### Accessories-Set US283999

(Included at no extra cost in all sets)

US280402.N	Eccentric Stop
US280852.1	Hex wrench
US280820	Brush
US000914	CleanBasic
US000924	Anti-Spatter
US280920	Burner Holder



**Value: \$191**



### Sets

	Clamp	Bolt	Stop	Square incl. INCH scale	Square incl. INCH scale	Threaded Bolt	Stop	
Material	burnished / nitrided	burnished	nitrided	nitrided	nitrided	burnished	galvanized	
Item No.	US280604	US280511	US280420.N	US280110.N	US280162.N	US280543	US160415	
<b>Basic-Set 1:</b> US281200	4 x	8 x	6 x	2 x		8 x	8 x	<b>\$2,389</b>
<b>Basic-Set 2:</b> US281300	8 x	12 x	8 x	4 x		8 x	8 x	<b>\$3,559</b>
<b>Basic-Set 3:</b> US281400	10 x	18 x	10 x	6 x	4 x	8 x	8 x	<b>\$5,779</b>

Weights of the sets: Set 1 = approx. 67 lbs., Set 2 = approx. 107 lbs., Set 3 = approx. 221 lbs.

Prices quoted in U.S.D., excl. sales taxes, packing and transport costs.

# Limited Time Offer

## Welding Table inclusive bundle

### System 28 Basic - Imperial Series Siegmund® Welding Table Basic Plasma Nitrided 4' x 8' Bundle

✓ Hardened tool steel X8.7,  
plasma nitrided and BAR-coated

✓ Borehole Ø 1-1/10"

✓ Boreholes in diagonal grid

✓ Weight approx. 1,442 lbs



4x

US280610.N

2x

US280630.N



12x

US280511



2x

US280420.N



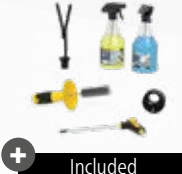
4x

US280109.N



2x

US280152.N



+

Included  
6 pieces

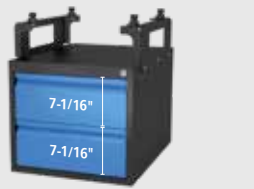
US283999

was \$8,695

Item No. US288630.XD7

# \$7,659

Total weight of this offer (Welding table incl. Bundle) approx. 1,551 lbs.



#### Sub Table Box

inclusive 2 drawers with  
suitable mounting.  
Max. load capacity per  
drawer approx. 110 lbs.  
Drawer pull-out length 15-3/4"

**\$788**

Item No. US281990.1

**NEW**



#### High-quality manufactured bench vice

Explore the new bench vice 5-7/8" from  
Siegmund. It is a high-quality manufactured  
product, machined on 4 sides to ensure  
smooth sliding and precise clamping.

**\$497**

Item No. US004330

# Welding Tables

For fine detail applications

System 16 (5/8" = 16 mm)

Borehole Ø 5/8"

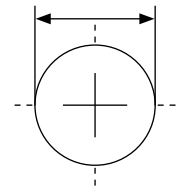
Boreholes on the surface 2" x 2" grid

Height of table side 5-7/8"

Boreholes on table side 3 rows with 1" spacing

2 rows with 2" spacing

Material thickness approx. 7/16" – 1/2"



## System 16 Extreme 8.7 PLUS – Imperial Series



Tables	4' x 5' (48" x 60")	4' x 8' (48" x 96")	5' x 10' (60" x 120")
Item No.	US160035.X7PL	US160030.X7PL	US160040.X7PL
Weight	approx. 797 lbs	approx. 1,256 lbs	approx. 1,926 lbs
Legs	4	6	6
<b>PRICE</b>	<b>\$5,270</b>	<b>\$7,910</b>	<b>\$11,260</b>

Maximum recommended static total load with 4 legs 4,400 lbs based on even load distribution. (Data only for leg standard equipment)



### Table Legs

Item No.	US160853.X	US160858.X	US160877.XX	US160860.XX <sup>1</sup>	US160879.XX <sup>1</sup>
Capacity per table leg	2,200 lbs	2,200 lbs	2,200 lbs	<b>440 lbs</b>	<b>440 lbs</b>
Leg height	30"	32"	22" – 38"	30"	24" – 36"
Table height	36"	38"	28" – 44"	36"	30" – 42"
Fine adjustment	1-5/8"	1-5/8"	1-5/8"	1-3/16"	1-3/16"
<b>Surcharge per leg</b>	<b>included</b>	<b>alternatively</b>	<b>\$87</b>	<b>\$95</b>	<b>\$146</b>

<sup>1</sup>Note castor: Not recommended for welding tables with 6 table legs.

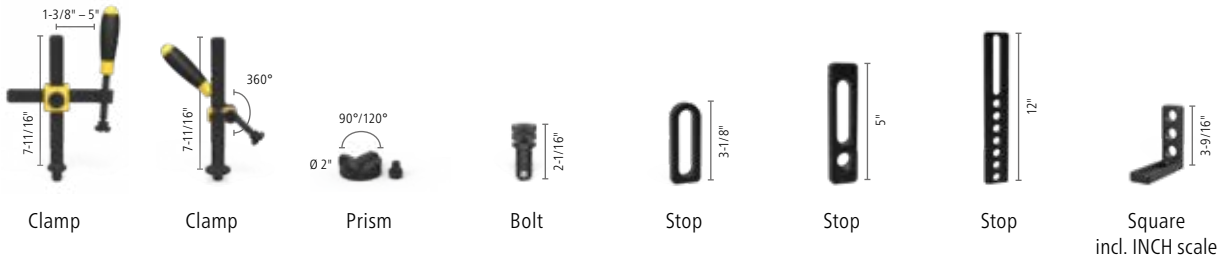
### Accessories-Set US163999

(Included at no extra cost in all sets)

- US160402.N Eccentric Stop
- US160852 Hex wrench
- US160820 Brush
- US000914 CleanBasic
- US000924 Anti-Spatter
- US160920 Burner Holder



Value: \$161



Sets	Clamp	Clamp	Prism	Bolt	Stop	Stop	Stop	Square incl. INCH scale
Material	burnished / nitrided	burnished	nitrided	burnished	nitrided	nitrided	nitrided	nitrided
Item No.	US160610	US160630	US160645.1.N	US160511	US160410.N	US160420.N	US160425.N	US160110.N
<b>Set 1:</b> US163100	4 x			8 x	2 x	4 x		2 x
<b>Set 2:</b> US163200	6 x	2 x	4 x	12 x	4 x	6 x	2 x	4 x
<b>Set 3:</b> US163300	8 x	4 x	4 x	16 x	4 x	6 x	2 x	4 x
<b>Set 4:</b> US163400	10 x	6 x	6 x	20 x	6 x	8 x	4 x	6 x
<b>Set 5:</b> US163500	12 x	12 x	8 x	30 x	8 x	8 x	4 x	10 x

Weights of the sets: Set 1 = approx. 23 lbs., Set 2 = approx. 73 lbs., Set 3 = approx. 161 lbs., Set 4 = approx. 190 lbs., Set 5 = approx. 262 lbs.

Prices quoted in U.S.D., excl. sales taxes, packing and transport costs.



# Limited Time Offer

## Welding Table inclusive bundle

### System 16 PLUS – Imperial Series Siegmund® Welding Table Professional Extreme 8.7 PLUS 4' x 8' Bundle

- ✓ Hardened tool steel X8.7, plasma nitrided and BAR-coated
- ✓ Borehole Ø 5/8"
- ✓ INCH scale engraved on the surface
- ✓ Boreholes on the surface 2" x 2" grid
- ✓ Weight approx. 1,256 lbs



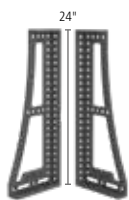
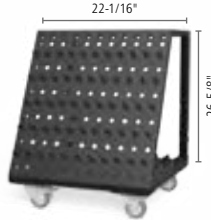


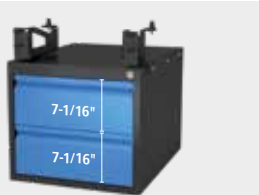
		
<b>5x</b>	<b>5x</b>	<b>8x</b>
US160610	US160630	US160511
		
<b>4x</b>	<b>1x+1x</b>	<b>1x</b>
US160420.N	US160124+26.N	US004330
		
<b>2x</b>	<b>1x</b>	<b>6 pieces</b>
US000546	US160910	US163999

was \$11,553  
Item No. US168030.X7PL

# \$10,259

Total weight of this offer (Welding table incl. Bundle) approx. 1,404 lbs.

			
12"	20"	24"	22-1/16"
26-5/8"			
Square incl. INCH scale	Square incl. INCH scale	Square incl. INCH scale	Tool Cart
nitrided	nitrided	nitrided	powder coated finish
US160162.N	US160164.N	US160134+36.N	US160910
			<b>\$1,369</b>
2 x	2 x		<b>\$3,209</b>
2 x	2 x	1 x + 1 x	1 x
4 x	2 x	1 x + 1 x	1 x
4 x	4 x	2 x + 2 x	1 x
			<b>\$9,019</b>



#### Sub Table Box

inclusive 2 drawers with suitable mounting.  
Max. load capacity per drawer approx. 110 lbs.  
Drawer pull-out length 15-3/4"

**\$788**  
Item No. US162990.1



# Welding Tables

For fine detail applications

System 16 (5/8" = 16 mm)

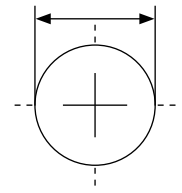
Borehole Ø 5/8"

Boreholes on the surface 2" x 2" grid

Boreholes on the table side in diagonal grid

Height of table side 3-15/16"

Material thickness approx. 7/16" – 1/2"



## System 16 Extreme 8.7 – Imperial Series



Tables	3' x 4' (36" x 48")	4' x 5' (48" x 60")	4' x 8' (48" x 96")	5' x 5' (60" x 60")	5' x 10' (60" x 120")
Item No.	US160025.X7	US160035.X7	US160030.X7	US160050.X7	US160040.X7
Weight	approx. 486 lbs	approx. 726 lbs	approx. 1,151 lbs	approx. 907 lbs	approx. 1,725 lbs
Legs	4	4	6	4	6
<b>PRICE</b>	<b>\$3,195</b>	<b>\$4,850</b>	<b>\$7,705</b>	<b>\$6,200</b>	<b>\$10,755</b>

Maximum recommended static total load with 4 legs 4,400 lbs based on even load distribution. (Data only for leg standard equipment)



### Table Legs

Item No.	US160858.X	US160877.XX	US160876.XX <sup>1</sup>	US160879.XX <sup>1</sup>
Capacity per table leg	2,200 lbs	2,200 lbs	<b>440 lbs</b>	<b>440 lbs</b>
Leg height	32"	22" – 38"	32"	24" – 36"
Table height	36"	26" – 42"	36"	28" – 40"
Fine adjustment	1-5/8"	1-5/8"	1-3/16"	1-3/16"
<b>Surcharge per leg</b>	<b>included</b>	<b>\$87</b>	<b>\$97</b>	<b>\$146</b>

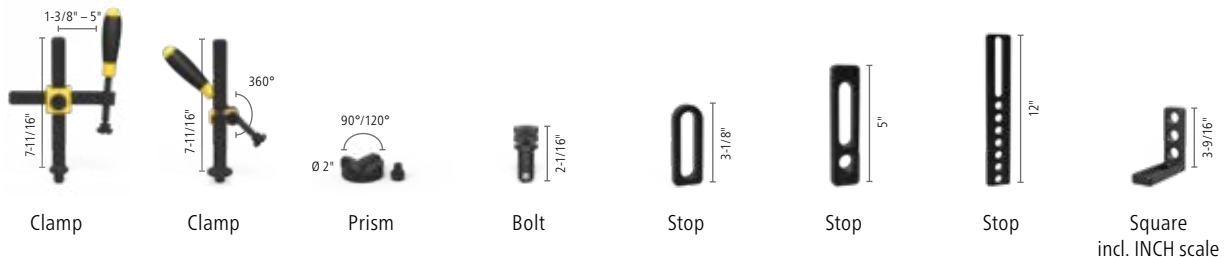
<sup>1</sup>Note castor: Not recommended for welding tables with 6 table legs.

### Accessories-Set US163999 (Included at no extra cost in all sets)

- US160402.N Eccentric Stop
- US160852 Hex wrench
- US160820 Brush
- US000914 CleanBasic
- US000924 Anti-Spatter
- US160920 Burner Holder



**Value: \$161**



Sets	Clamp	Clamp	Prism	Bolt	Stop	Stop	Stop	Square incl. INCH scale
Material	burnished / nitrided	burnished	nitrided	burnished	nitrided	nitrided	nitrided	nitrided
Item No.	US160610	US160630	US160645.1.N	US160511	US160410.N	US160420.N	US160425.N	US160110.N
<b>Set 1:</b> US163100	4 x			8 x	2 x	4 x		2 x
<b>Set 2:</b> US163200	6 x	2 x	4 x	12 x	4 x	6 x	2 x	4 x
<b>Set 3:</b> US163300	8 x	4 x	4 x	16 x	4 x	6 x	2 x	4 x
<b>Set 4:</b> US163400	10 x	6 x	6 x	20 x	6 x	8 x	4 x	6 x
<b>Set 5:</b> US163500	12 x	12 x	8 x	30 x	8 x	8 x	4 x	10 x

Weights of the sets: Set 1 = approx. 23 lbs., Set 2 = approx. 73 lbs., Set 3 = approx. 161 lbs., Set 4 = approx. 190 lbs., Set 5 = approx. 262 lbs.

Prices quoted in U.S.D., excl. sales taxes, packing and transport costs.

## Limited Time Offer

### Welding Table inclusive bundle

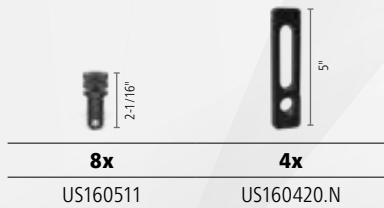
#### System 16 – Imperial Series Siegmund® Welding Table Professional Extreme 8.7 5' x 10' Bundle

- ✓ Hardened tool steel X8.7, plasma nitrided and BAR-coated
- ✓ Borehole Ø 5/8"
- ✓ INCH scale engraved on the surface
- ✓ Boreholes on the surface 2" x 2" grid
- ✓ Weight approx. 1,725 lbs



was \$13,857  
Item No. US168040.X7

# \$12,329



Total weight of this offer (Welding table incl. Bundle) approx. 1,818 lbs.

Square incl. INCH scale	Square incl. INCH scale	Square incl. INCH scale	Tool Cart	
nitrided	nitrided	nitrided	powder coated finish	
US160162.N	US160164.N	US160134+36.N	US160910	<b>\$1,369</b>
2 x	2 x			<b>\$3,209</b>
2 x	2 x	1 x + 1 x	1 x	<b>\$5,099</b>
4 x	2 x	1 x + 1 x	1 x	<b>\$6,479</b>
4 x	4 x	2 x + 2 x	1 x	<b>\$9,019</b>



#### Sub Table Box

inclusive 2 drawers with suitable mounting.  
Max. load capacity per drawer approx. 110 lbs.  
Drawer pull-out length 15-3/4"

**\$788**  
Item No. US160990.1



#### High-quality manufactured bench vice

Explore the new bench vice 5-7/8" from Siegmund. It is a high-quality manufactured product, machined on 4 sides.

**\$497**  
Item No. US004330

# Height Adjustable Rotating Table

Get to your ideal working height quick and easy

**>>** *The Siegmund rotating weld table with adjustable height provides easy handling with a flexible working position for heavy loads.*

## Ergonomic working in a small space

The Siegmund height adjustable rotating table provides an ergonomic and space saving solution. The work top height is infinitely variable and can be fixed in position by a side locking lever.

## 360° handling

The height adjustable rotating table allows easy access around all sides of the workpiece. For quick and easy grounding without twisting the cable, we recommend our magnetic ground connection.

## Versions – static or portable

The basic frame "static" comes with sturdy base plates for a secure stand. The basic frame "portable" comes with sturdy castors with locking brakes. The steel construction is powder-coated and is delivered pre-assembled.





**2,200 lbs\***

### Magnetic ground connection for rotating table

- quick and easy grounding
- no cable twisting
- high holding force on clean and smooth surfaces
- delivery contents: Adapter plate and countersunk-head screw



Boreholes surface Ø 16 mm (5/8")	Size Plate / Weight Plate	Rotating table „static“ Total weight approx. 313 lbs	Rotating table „portable“ Total weight approx. 313 lbs
 <p><b>Rotating table with perforated plate round</b> Through-hardened tool steel X8.7, plasma nitrided and BAR-coated <sup>1</sup> Boreholes 2" x 2" Grid Material thickness approx. 7/16" to 1/2"</p>	<p><b>Ø 40"</b> approx. 159 lbs</p>	<p><b>\$2,751</b> USDS164210.X7</p>	<p><b>\$2,955</b> USDM164210.X7</p>
 <p><b>Magnetic ground connection</b> with rotary joint for a high holding force on clean and smooth surfaces.</p>			<p><b>\$57</b> US00003399</p>

<sup>1</sup> Well protected against rust, scratches and weld spatter.

\*Maximum load capacity excluding top plate for both static and portable units

Working height between 31" and 43".

Do you need accessories for your rotating table? See from page 36.

# Mobile lifting table

## Ergonomic back-friendly working

1,100 lbs\*

**>>** *The Siegmund mobile lifting table offers the ultimate flexibility. Whether you need to use it for assembly, clamping or simply for an additional workspace, the Siegmund mobile lifting table is perfect for countless applications.*

### Working at different heights

The continuous height adjustment enables physiological pain free working for the most demanding of precision operations.


### Height adjustment

With the foot pedal the working height can be adjusted infinitely variable. The protective plate below the worktop protects the hydraulic unit from dirt from above.

### Basic frame – sturdy and mobile

The sturdy steel construction offers total stability with continuous height adjustment. The mobile lifting table has two castors with locking brakes and two castors for heavy loads. The steel construction is powder-coated and is delivered pre-assembled.



Boreholes surface Ø 16 mm (5/8")	Size Plate / Weight Plate	Mobile lifting table	Heavy-duty Mobile lifting table
		Total weight approx. 339 lbs	Total weight approx. 803 lbs
	<b>Mobile lifting table with perforated plate</b> Through-hardened tool steel X8.7, plasma nitrided and BAR-coated <sup>1</sup> Boreholes 2" x 2" Grid Material thickness approx. 7/16" to 1/2"	<b>3' x 4' (36" x 48")</b> approx. 195 lbs	not compatible
	<b>4' x 5' (48" x 60")</b> approx. 362 lbs	not compatible	<b>\$4,607</b> USHST64015.X7

<sup>1</sup> Well protected against rust, scratches and weld spatter.  
The mobile lifting table is only compatible with this worktop (special attachment points in the worktop are required).  
\*Maximum load capacity: Basic frame (without plate)

**Working height from approx. 28" to 39".**  
**Do you need accessories for your mobile lifting table? See from page 36.**

# Siegmund Workstation

Perfect welding platform, with more than enough space for all of your accessories

Thanks to the intelligent concept of the Siegmund Workstation, all of your tools are always within reach at your workplace.

2,200 lbs\*

**CONFIGURE YOUR WORKSTATION YOURSELF**  
For detailed information see page 44/45

## The essential component of every workbench – the worktop

A work plate has to withstand high loads. We have special work plates for you, according to your needs – whether sawing, drilling, welding, clamping etc.

## The base – a sturdy frame




The sturdy frame offers a solid base for the most challenging tasks such as sawing, grinding or drilling.

## Benefit from the versatility

When working with wood or metals the Workstation offers maximum versatility to expand all ideas and projects. Even tools can be stored in the heavy duty steel drawers below.



Do you need accessories for your Workstation? See from page 36.

Boreholes surface Ø 16 mm (5/8")	Size Plate / Total weight	Workstation	Workstation incl. Set A	Workstation incl. Set B
	<b>Siegmund Workstation with perforated plate (with Plasma nitration<sup>1</sup>)</b> 2'8" x 4' (32" x 48") approx. 318 lbs	\$2,218 US164001	\$2,776 US167321	\$3,155 US167341
	<b>Siegmund Workstation with perforated plate (with Plasma nitration<sup>1</sup>) incl. 2 drawers</b> 2'8" x 4' (32" x 48") approx. 360 lbs	\$2,427 US164003	\$2,985 US167322	\$3,364 US167342
	<b>Siegmund Workstation with perforated plate (with Plasma nitration<sup>1</sup>) incl. 4 drawers</b> 2'8" x 4' (32" x 48") approx. 404 lbs	\$2,645 US164005	<b>% SPECIAL OFFER</b> \$2,979 US167323	\$3,582 US167343

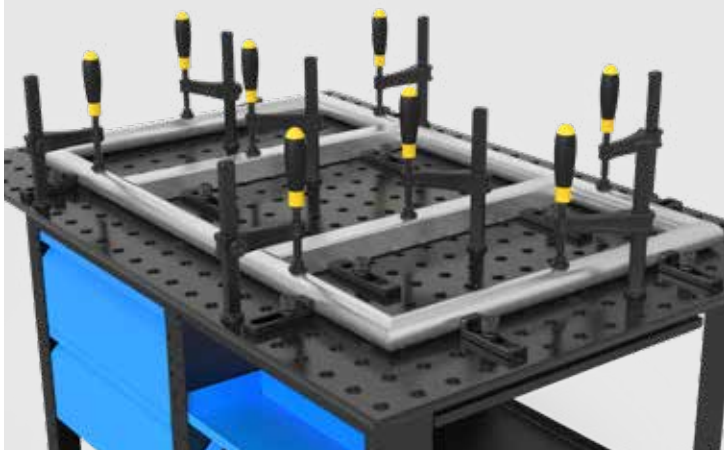
<sup>1</sup> Well protected against rust, scratches and weld spatter.

\*Maximum recommended static total load based on even load distribution (on castors 880 lbs).

Sets	Clamp	Bolt	Stop	Square	Hex wrench	
Material	burnished / nitrided	burnished	nitrided	nitrided		
Item No.	US160620	US160511	US160410.N	US160108.N	US160852	
Set A: US167320	2 x	6 x	4 x		1 x	\$558
Set B: US167340	4 x	8 x	6 x	2 x	1 x	\$937

# The revolutionary workbench

From the world market leader



## Accessories

### Imperial Series



US280401.N



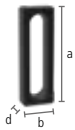
US280402.N



US280403.N

<b>US280401.N</b>	<b>Eccentric Stop Ø 2-3/8" - nitrided</b>	<b>\$33</b>
	used where space is restricted, stepless adjusting	
	Ø: 2-3/8" MS: (d) 1" Weight: 0.93 lbs	
<b>US280402.N</b>	<b>Eccentric Stop Ø 2-3/8" with M10 thread - nitrided</b>	<b>\$40</b>
	for ground connection, stepless adjusting	
	Ø: 2-3/8" MS: (d) 1" Weight: 0.90 lbs	
<b>US280403.N</b>	<b>Eccentric Stop Ø 4" - nitrided</b>	<b>\$40</b>
	also serves as a support surface, stepless adjusting	
	Ø: 4" MS: (d) 1" Weight: 3.09 lbs	

MS=Material thickness;



US280410.N



US280420.N



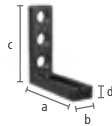
US280430.N

<b>US280410.N</b>	<b>Universal Stop 6" L - nitrided</b>	<b>\$59</b>
	elongated hole	
	Length: (a) 6" Width: (b) 1-15/16" MS: (d) 1" VB: 4" Weight: 1.72 lbs	
<b>US280420.N</b>	<b>Universal Stop 9" L - nitrided</b>	<b>\$89</b>
	for use with both prisms and adapters	
	Length: (a) 9" Width: (b) 1-15/16" MS: (d) 1" VB: 4" Weight: 3.07 lbs	
<b>US280430.N</b>	<b>Universal Stop 24" S - nitrided</b>	<b>\$123</b>
	5 system boreholes	
	Length: (a) 24" Width: (b) 3-15/16" MS: (d) 1" VB: 8" Weight: 21.37 lbs	

MS=Material thickness; VB=Adjusting range



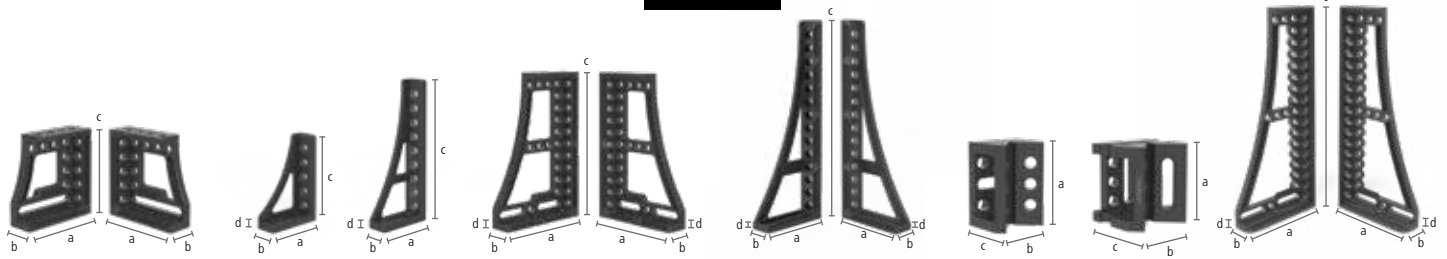
US280109.N



US280110.N

<b>US280109.N</b>	<b>Stop and Clamping Square 7" SL - nitrided</b>	<b>\$120</b>
	borehole / elongated hole	
	Length: (a) 7" Width: (b) 1-15/16" Height: (c) 2-15/16" MS: (d) 1" Weight: 3.09 lbs	
<b>US280110.N</b>	<b>Stop and Clamping Square 7" L - nitrided</b>	<b>\$153</b>
	borehole / elongated hole, incl. INCH scale	
	Length: (a) 7" Width: (b) 1-15/16" Height: (c) 7" MS: (d) 1" Weight: 4.35 lbs	





US280124.N US280126.N US280152.N US280162.N US280134.N US280136.N US280166.N US280167.N US280190.N US280191.N US280144.N US280146.N

**US280124+26.N Stop and Clamping Square 12" GK left / right - nitrided** **each \$378**



stop on left / right, incl. INCH scale, usable as table extension, for heavy components, material: GGG40, recommended as a pair

Length: (a)	Width: (b)	Height: (c)	MS: (d)	Weight:
11-1/4"	3-3/4"	12"	1"	53.18 lbs

**US280152.N Stop and Clamping Square 12" G - nitrided** **\$240**



stop on left, incl. INCH scale, usable as table extension, material: GGG40

Length: (a)	Width: (b)	Height: (c)	MS: (d)	Weight:
7-7/8"	2-15/16"	12"	1"	15.02 lbs

**US280162.N Stop and Clamping Square 20" G - nitrided** **\$313**



stop on left, incl. INCH scale, usable as table extension, material: GGG40

Length: (a)	Width: (b)	Height: (c)	MS: (d)	Weight:
7-7/8"	2-15/16"	20"	1"	20.62 lbs

**US280134+36.N Stop and Clamping Square 24" GK left / right - nitrided** **each \$568**



stop on left / right, incl. INCH scale, usable as table extension, for heavy components, material: GGG40, recommended as a pair

Length: (a)	Width: (b)	Height: (c)	MS: (d)	Weight:
15-3/8"	3-3/4"	24"	1"	59.18 lbs

**US280166+67.N Stop and Clamping Square 30" G left / right - nitrided** **each \$384**



stop on left / right, incl. INCH scale, usable as table extension, material: GGG40

Length: (a)	Width: (b)	Height: (c)	MS: (d)	Weight:
10-7/8"	3-3/8"	30"	1"	30 lbs

**US280190.N Corner Connection small, Cast iron - nitrided** **\$339**



45° diagonal table extension, material: GGG40

Length: (a)	Width: (b)	Height: (c)	MS: (d)	Weight:
7-15/16"	5-7/8"	4-9/16"	-	26 lbs

**US280191.N Corner Connection, Cast iron - nitrided** **\$452**



45° diagonal table extension, material: GGG40

Length: (a)	Width: (b)	Height: (c)	MS: (d)	Weight:
8"	7-7/8"	6-11/16"	-	35.4 lbs

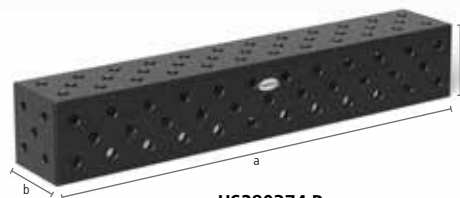
**US280144+46.N Stop and Clamping Square 31" GK left / right - nitrided** **each \$694**



stop on left / right, incl. INCH scale, usable as table extension, for heavy components, material: GGG40, recommended as a pair

Length: (a)	Width: (b)	Height: (c)	MS: (d)	Weight:
14-13/16"	3-3/4"	31"	1"	60 lbs

MS=Material thickness;



**US280374.P**



**Square U-Shape 8/8 - Plasma nitrided**

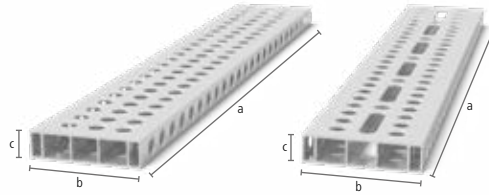
with diagonal grid, as table extension and vertical superstructure, to connect tables (with connecting bolt US280560.N), for heavy components, from 24" with mounting holes for table legs, from 36" support through table leg required

	Length: (a)	Width: (b)	Height: (c)	MS: (d)	Weight:	
<b>US280356.P</b>	<b>12"</b>	<b>8"</b>	<b>7-7/8"</b>	<b>1"</b>	<b>93 lbs</b>	<b>\$776</b>
<b>US280362.P</b>	<b>24"</b>	<b>8"</b>	<b>7-7/8"</b>	<b>1"</b>	<b>175 lbs</b>	<b>\$1,044</b>
<b>US280374.P</b>	<b>48"</b>	<b>8"</b>	<b>7-7/8"</b>	<b>1"</b>	<b>318 lbs</b>	<b>\$1,735</b>
<b>US280386.P</b>	<b>72"</b>	<b>8"</b>	<b>7-7/8"</b>	<b>1"</b>	<b>468 lbs</b>	<b>\$2,330</b>
<b>US280391.P</b>	<b>96"</b>	<b>8"</b>	<b>7-7/8"</b>	<b>1"</b>	<b>618 lbs</b>	<b>\$3,012</b>

MS=Material thickness;

## Accessories

### Imperial Series



USAR28014122.V

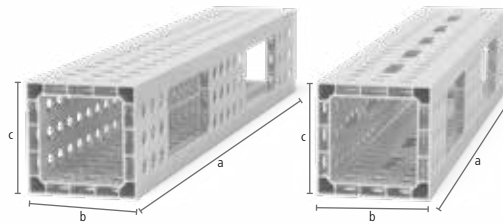
USAR28014122.VL

ALU

#### Aluminum profile bracket 8"x2"

Stable stop due to large dimensions. Version with full grid with many clamping options. Version with elongated hole: Variable clamping also possible at an angle. Requires Clamping Bolt without slot triple. When table extension exceeds 40" additional support through an extra leg is required (Reduction Bushing US000546 required), consider further instructions for use for the article online!

	Style:	Length: (a)	Width: (b)	Height: (c)	Weight:	
USAR28014061.V	2" Grid	2'	8"	2"	7.52 lbs	\$82
USAR28014061.VL	2" Grid elongated hole	2'	8"	2"	7.30 lbs	\$93
USAR28014122.V	2" Grid	4'	8"	2"	14.91 lbs	\$180
USAR28014122.VL	2" Grid elongated hole	4'	8"	2"	14.45 lbs	\$207
USAR28014183.V	2" Grid	6'	8"	2"	22.27 lbs	\$296
USAR28014183.VL	2" Grid elongated hole	6'	8"	2"	35.85 lbs	\$340



USAQ28014122.V

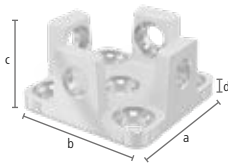
USAQ28014122.VLL

ALU

#### Aluminum profile U-shape 8"x8"

Clamping on up to 4 sides possible. Requires Clamping Bolt without slot Double, as table extension and vertical clamping surface. When table extension exceeds 40" additional support through an extra leg is required (Reduction Bushing US000546 required), consider further instructions for use for the article online! Flatness tolerance < 1/25" / 40"

	Style:	Length: (a)	Width: (b)	Height: (c)	Weight:	
USAQ28014061.V	2" Grid	2'	8"	8"	18.09 lbs	\$180
USAQ28014061.VLL	2" Grid elongated hole	2'	8"	8"	17.63 lbs	\$187
USAQ28014122.V	2" Grid	4'	8"	8"	34.98 lbs	\$426
USAQ28014122.VLL	2" Grid elongated hole	4'	8"	8"	33.81 lbs	\$440
USAQ28014183.V	2" Grid	6'	8"	8"	52.38 lbs	\$706
USAQ28014183.VLL	2" Grid elongated hole	6'	8"	8"	50.52 lbs	\$729



USAP800399.AT



USAP280602.N



USAP280605.N

#### USAP800399.AT Adapter for table connection for aluminum profiles - Aluminum-Titanium \$168

ALU Ti

for fastening the profiles on the front side, insert into profile and clamp to table side, for fixing: 2x US280511, 4x USAP280528, 2x US800653.1.N (not included in the delivery)

Length: (a)	Width: (b)	Height: (c)	MS: (d)	Weight:
5-7/8"	5-7/8"	3-1/8"	5/8"	2.84 lbs

#### USAP280602.N Adapter for screw clamps double - nitrided \$25

Scratch-proof N BAR

for using screw clamps in aluminum profiles, for screw clamps: US280610.N, US280630.N, US280615.N

Length: (a)	Width: (b)	Height: (c)	Ø:	Weight:
4-1/8"	-	-	1-3/4"	1.44 lbs

#### USAP280605.N Adapter for screw clamps basic - nitrided \$22

Scratch-proof N BAR

for using screw clamps in aluminum profiles, for Screw Clamps: US280610.N, US280630.N, US280615.N

Length: (a)	Width: (b)	Height: (c)	Ø:	Weight:
3-1/8"	-	-	1-3/4"	1.19 lbs

MS=Material thickness;

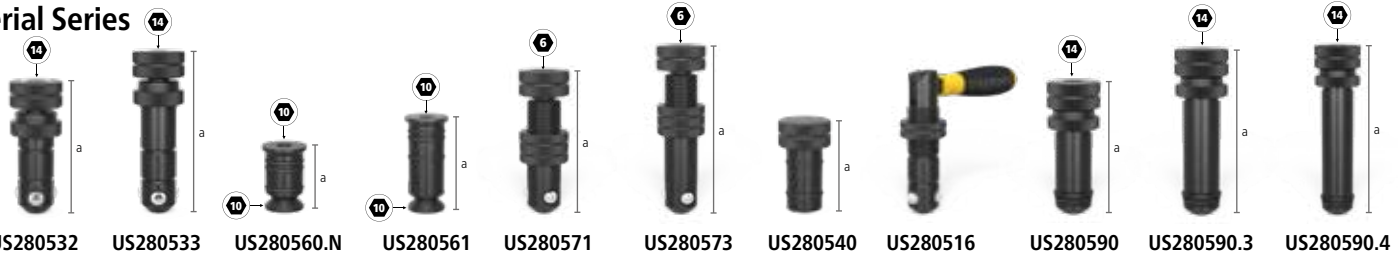


Part Number	Description	Price
<b>US000546</b>	<b>Reduction Bushing 28 -&gt; 16 - burnished</b> for clamping components from large systems on smaller systems, fixed inside the component, suitable for elongated holes Length: (a)    Ø:    MS: (d)    SK:    AM:    AM1:    ZK:    Weight: 1-1/8"    1-7/16"    -    -    -    -    -    0.15 lbs	\$22
<b>USAP280528</b>	<b>Flush Mount Bolt without slot double - burnished</b> for clamping 2 components, only for clamping aluminum profiles, countersunk connection of components, tighten aluminum parts only hand-tight Length: (a)    Ø:    MS: (d)    SK:    AM:    AM1:    ZK:    Weight: 2-3/4"    1-1/10"    -    49,400 lbf    -    7 lbf-ft    674 lbf    0.62 lbs	\$52
<b>USAP280529</b>	<b>Flush Mount Bolt without slot triple - burnished</b> for clamping 3 components, only for clamping aluminum profiles, countersunk connection of components, tighten aluminum parts only hand-tight Length: (a)    Ø:    MS: (d)    SK:    AM:    AM1:    ZK:    Weight: 3-5/8"    1-1/10"    -    49,400 lbf    -    7 lbf-ft    674 lbf    0.88 lbs	\$62
<b>USAP280530</b>	<b>Flush Mount Bolt without slot quadruple - burnished</b> for clamping 4 components, only for clamping aluminum profiles, countersunk connection of components, tighten aluminum parts only hand-tight Length: (a)    Ø:    MS: (d)    SK:    AM:    AM1:    ZK:    Weight: 4-5/8"    1-1/10"    -    49,400 lbf    -    7 lbf-ft    674 lbf    1.11 lbs	\$71
<b>US280583</b>	<b>Connecting Bolt with collar double - burnished</b> for connecting 2 components, to connect tables, U-squares and aluminum profiles, suitable for elongated holes, fixed long-term connection Length: (a)    Ø:    MS: (d)    SK:    AM:    AM1:    ZK:    Weight: 2-3/4"    1-1/10"    -    44,900 lbf    18 lbf-ft    18 lbf-ft    3,300 lbf    0.86 lbs	\$40
<b>US280584</b>	<b>Connecting Bolt with collar triple - burnished</b> for connecting 3 components, to connect tables, U-squares and aluminum profiles, suitable for elongated holes, fixed long-term connection Length: (a)    Ø:    MS: (d)    SK:    AM:    AM1:    ZK:    Weight: 3-3/4"    1-1/10"    -    44,900 lbf    18 lbf-ft    18 lbf-ft    3,300 lbf    1.12 lbs	\$47
<b>US280585</b>	<b>Connecting Bolt with collar quadruple - burnished</b> for connecting 4 components, to connect tables, U-squares and aluminum profiles, suitable for elongated holes, fixed long-term connection Length: (a)    Ø:    MS: (d)    SK:    AM:    AM1:    ZK:    Weight: 4-3/4"    1-1/10"    -    44,900 lbf    18 lbf-ft    18 lbf-ft    3,300 lbf    1.39 lbs	\$55
<b>US280511</b>	<b>Fast Clamping Bolt without slot double - burnished</b> for clamping 2 components, recommended for clamping aluminum profiles, without O-ring slot for a smooth surface, MUST NOT be used for connecting tables and U-shaped squares Length: (a)    Ø:    MS: (d)    SK:    AM:    AM1:    ZK:    Weight: 3-3/4"    1-1/10"    -    49,400 lbf    18 lbf-ft    7 lbf-ft    5,600 lbf    1.20 lbs	\$81
<b>US280513</b>	<b>Fast Clamping Bolt without slot triple - burnished</b> for clamping 3 components, recommended for clamping aluminum profiles, without O-ring slot for a smooth surface, MUST NOT be used for connecting tables and U-shaped squares Length: (a)    Ø:    MS: (d)    SK:    AM:    AM1:    ZK:    Weight: 4-3/4"    1-1/10"    -    49,400 lbf    18 lbf-ft    7 lbf-ft    5,600 lbf    1.43 lbs	\$89
<b>US280515</b>	<b>Fast Clamping Bolt without slot quadruple - burnished</b> for clamping 4 components, recommended for clamping aluminum profiles, without O-ring slot for a smooth surface, MUST NOT be used for connecting tables and U-shaped squares Length: (a)    Ø:    MS: (d)    SK:    AM:    AM1:    ZK:    Weight: 5-3/4"    1-1/10"    -    49,400 lbf    18 lbf-ft    7 lbf-ft    5,600 lbf    1.68 lbs	\$98
<b>US800653.1.N</b>	<b>Spacer Ring for Premium Light pack of 4 - nitrided</b> distance between two clamping elements, is required for clamping to material thickness 5/8" with bolt US280511, Scope of delivery: 4 pieces Length: (a)    Ø:    MS: (d)    SK:    AM:    AM1:    ZK:    Weight: -    1-1/2"    1/2"    -    -    -    -    0.09 lbs	\$14

MS=Material thickness; SK=Shearing Force; AM=Tightening Torque Steel; AM1= Tightening Torque Aluminum; ZK=Tensile Force; Clamping torque dependent on material.

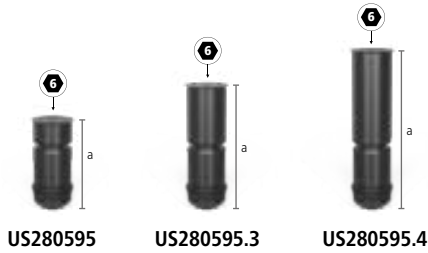
## Accessories

## Imperial Series



<b>US280532</b>	<b>Universal Bolt Comfort short - burnished</b>	<b>\$85</b>
for clamping 2 components, Clamping range 1-3/4" – 2-1/16", MUST NOT be used for connecting tables and U-shaped squares		
Length: (a)	Ø:	SK: AM: AM1: ZK: ZK1: Weight:
3-15/16"	1-1/10"	44,900 lbf 18 lbf-ft 7 lbf-ft 5,600 lbf - 1.32 lbs
<b>US280533</b>	<b>Universal Bolt Comfort long - burnished</b>	<b>\$95</b>
for clamping 3 components, Clamping range 2-3/4" – 3-1/16", MUST NOT be used for connecting tables and U-shaped squares		
Length: (a)	Ø:	SK: AM: AM1: ZK: ZK1: Weight:
4-15/16"	1-1/10"	44,900 lbf 18 lbf-ft 7 lbf-ft 5,600 lbf - 1.54 lbs
<b>US280560.N</b>	<b>Connecting Bolt short - nitrided</b>	<b>\$33</b>
for connecting 2 components, to connect tables and U-squares, not suitable for aluminum profiles, not suitable for elongated holes, fixed long-term connection		
Length: (a)	Ø:	SK: AM: AM1: ZK: ZK1: Weight:
1-15/16"	1-1/10"	44,900 lbf 18 lbf-ft - 2,200 lbf - 0.46 lbs
<b>US280561</b>	<b>Connecting Bolt long - burnished</b>	<b>\$41</b>
for connecting 3 components, to connect tables and U-squares, not suitable for aluminum profiles, not suitable for elongated holes, fixed long-term connection		
Length: (a)	Ø:	SK: AM: AM1: ZK: ZK1: Weight:
2-15/16"	1-1/10"	44,900 lbf 18 lbf-ft - 2,200 lbf - 0.58 lbs
<b>US280571</b>	<b>Fast Clamping Bolt adjustable without slot short - burnished</b>	<b>\$89</b>
Clamping dimensions 1" – 1-15/16", clamping of customized laser cut profiles, suitable for aluminum profiles, tighten aluminum parts only hand-tight, MUST NOT be used for connecting tables and U-shaped squares		
Length: (a)	Ø:	SK: AM: AM1: ZK: ZK1: Weight:
4-1/2"	1-1/10"	49,400 lbf 18 lbf-ft - 5,600 lbf - 1.57 lbs
<b>US280573</b>	<b>Fast Clamping Bolt adjustable without slot long - burnished</b>	<b>\$109</b>
Clamping dimensions 1-15/16" – 2-15/16", clamping of customized laser cut profiles, suitable for aluminum profiles, tighten aluminum parts only hand-tight, MUST NOT be used for connecting tables and U-shaped squares		
Length: (a)	Ø:	SK: AM: AM1: ZK: ZK1: Weight:
5-1/2"	1-1/10"	49,400 lbf 18 lbf-ft - 5,600 lbf - 1.83 lbs
<b>US280540</b>	<b>Positioning Bolt - burnished</b>	<b>\$22</b>
substitutes a second clamping bolt cost-effectively, MUST NOT be used for connecting tables and U-shaped squares		
Length: (a)	Ø:	SK: AM: AM1: ZK: ZK1: Weight:
2-3/4"	1-1/10"	- - - - - 0.93 lbs
<b>US280516</b>	<b>Fast Clamping Bolt with handle - burnished</b>	<b>\$104</b>
clamping without the use of tools, Clamping range 1-5/16" – 2-3/8", MUST NOT be used for connecting tables and U-shaped squares		
Length: (a)	Ø:	SK: AM: AM1: ZK: ZK1: Weight:
9-1/4"	1-1/10"	49,400 lbf - - 5,600 lbf - 1.39 lbs
<b>US280590</b>	<b>Areal Clamping Bolt double - burnished</b>	<b>\$93</b>
for clamping 2 components, Clamping range approx. 1-7/8" – 2-1/16", recommended for clamping aluminum profiles, without O-ring slot for a smooth surface, MUST NOT be used for connecting tables and U-shaped squares		
Length: (a)	Ø:	SK: AM: AM1: ZK: ZK1: Weight:
3-15/16"	1-1/10"	44,900 lbf 37 lbf-ft 15 lbf-ft 4,500 lbf 1,348 lbf 1.23 lbs
<b>US280590.3</b>	<b>Areal Clamping Bolt triple - burnished</b>	<b>\$100</b>
for clamping 3 components, Clamping range approx. 2-13/16" – 3-1/16", recommended for clamping aluminum profiles, without O-ring slot for a smooth surface, MUST NOT be used for connecting tables and U-shaped squares		
Length: (a)	Ø:	SK: AM: AM1: ZK: ZK1: Weight:
4-15/16"	1-1/10"	44,900 lbf 37 lbf-ft 15 lbf-ft 4,500 lbf 1,348 lbf 1.50 lbs
<b>US280590.4</b>	<b>Areal Clamping Bolt quadruple - burnished</b>	<b>\$108</b>
for clamping 4 components, Clamping range approx. 3-13/16" – 4-1/16", recommended for clamping aluminum profiles, without O-ring slot for a smooth surface, MUST NOT be used for connecting tables and U-shaped squares		
Length: (a)	Ø:	SK: AM: AM1: ZK: ZK1: Weight:
5-7/8"	1-1/10"	44,900 lbf 37 lbf-ft 15 lbf-ft 4,500 lbf 1,348 lbf 1.76 lbs




SK=Shearing Force; AM=Tightening Torque Steel; AM1= Tightening Torque Aluminum; ZK=Tensile Force Steel; ZK1=Tensile Force Aluminum; Clamping torque dependent on material.



<b>US280595</b>	<b>Areal Clamping Flush Mount Bolt double - burnished</b>	<b>\$65</b>
for clamping 2 components, countersunk connection of components, Clamping range approx. 1-7/8" – 2-1/16", MUST NOT be used for connecting tables and U-shaped squares, not suitable for elongated holes		
Length: (a)	Ø:	SK:
2-9/16"	1-1/10"	44,900 lbf
		AM:
		37 lbf-ft
		AM1:
		15 lbf-ft
		ZK:
		2,200 lbf
		ZK1:
		1,348 lbf
		Weight:
		0.64 lbs
<b>US280595.3</b>	<b>Areal Clamping Flush Mount Bolt triple - burnished</b>	<b>\$73</b>
for clamping 3 components, countersunk connection of components, Clamping range approx. 2-13/16" – 3-1/16", MUST NOT be used for connecting tables and U-shaped squares, not suitable for elongated holes		
Length: (a)	Ø:	SK:
3-9/16"	1-1/10"	44,900 lbf
		AM:
		37 lbf-ft
		AM1:
		15 lbf-ft
		ZK:
		2,200 lbf
		ZK1:
		1,348 lbf
		Weight:
		0.90 lbs
<b>US280595.4</b>	<b>Areal Clamping Flush Mount Bolt quadruple - burnished</b>	<b>\$81</b>
for clamping 4 components, countersunk connection of components, Clamping range approx. 3-13/16" – 4-1/16", MUST NOT be used for connecting tables and U-shaped squares, not suitable for elongated holes		
Length: (a)	Ø:	SK:
4-1/2"	1-1/10"	44,900 lbf
		AM:
		37 lbf-ft
		AM1:
		15 lbf-ft
		ZK:
		2,200 lbf
		ZK1:
		1,348 lbf
		Weight:
		1.15 lbs

SK=Shearing Force; AM=Tightening Torque Steel; AM1=Tightening Torque Aluminum; ZK=Tensile Force Steel; ZK1=Tensile Force Aluminum; Clamping torque dependent on material.



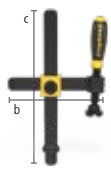
<b>US280740</b>	<b>Magnetic Clamping Bolt 68 - Aluminum</b>	<b>\$41</b>
	Length of Shaft 1", clamping without the use of tools, suitable for pressure-sensitive parts or when counterholding is not possible	
Length: (a)	Ø:	Weight:
2-11/16"	1-1/10"	0.20 lbs
<b>US280740.1</b>	<b>Magnetic Clamping Bolt 93 - Aluminum</b>	<b>\$49</b>
	Length of Shaft 2", clamping without the use of tools, suitable for pressure-sensitive parts or when counterholding is not possible	
Length: (a)	Ø:	Weight:
3-11/16"	1-1/10"	0.29 lbs
<b>US280740.2</b>	<b>Magnetic Clamping Bolt 118 - Aluminum</b>	<b>\$57</b>
	Length of Shaft 3", clamping without the use of tools, suitable for pressure-sensitive parts or when counterholding is not possible	
Length: (a)	Ø:	Weight:
4-5/8"	1-1/10"	0.35 lbs



<b>US280706</b>	<b>Quick-Change Clamp 100</b>	<b>\$101</b>
Length clamping arm 3-15/16", Clamping range 3/16" – 2-15/16", Mounting in system boreholes		
Length: (a)	Width: (b)	Height: (c)
13-3/8"	1-3/16"	5-7/8"
		Ø:
		1-1/10"
		Weight:
		2.65 lbs
<b>US280707</b>	<b>Quick-Change Clamp 160</b>	<b>\$101</b>
Length clamping arm 6-5/16", Clamping range 0" – 2-15/16", Mounting in system boreholes		
Length: (a)	Width: (b)	Height: (c)
14-3/16"	1-3/16"	5-7/8"
		Ø:
		1-1/10"
		Weight:
		2.65 lbs

## Accessories

### Imperial Series



US280610.N



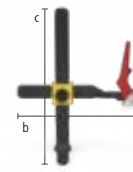
US280630.N



US280604



US280608.N



US280615.N

<b>US280610.N</b>	<b>Professional Screw Clamp - nitrided</b>	<b>\$120</b>
	interchangeable prism, ball diameter spindle 5/8"	
	max. holding force	Width: (b)      Height: (c)      Weight:
	1,125 lbf	8-2/3"      12-3/16"      5.95 lbs
<b>US280630.N</b>	<b>Professional Screw Clamp 45°/90° - nitrided</b>	<b>\$112</b>
	interchangeable prism, ball diameter spindle 5/8", stepless rotation from 0°-360°	
	max. holding force	Width: (b)      Height: (c)      Weight:
	1,125 lbf	-      12-3/16"      5.07 lbs
<b>US280604</b>	<b>Pipe Clamp Universal - burnished / nitrided</b>	<b>\$122</b>
	interchangeable prism, ball diameter spindle 5/8", clamping at an angle of +/- 42°, fastening with an adjusting ring	
	max. holding force	Width: (b)      Height: (c)      Weight:
	675 lbf	10-7/16"      9-5/6"      5.06 lbs
<b>US280608.N</b>	<b>Basic Pipe Clamp 90° - nitrided</b>	<b>\$82</b>
	interchangeable prism, ball diameter spindle 5/8", clamping at an angle of 90°, stepless rotation from 0°-360°, fastening with an adjusting ring	
	max. holding force	Width: (b)      Height: (c)      Weight:
	675 lbf	-      9"      3.08 lbs
<b>US280615.N</b>	<b>Professional Fast Tension Clamp - nitrided</b>	<b>\$155</b>
	max. holding force	Width: (b)      Height: (c)      Weight:
	1,125 lbf	10-5/6"      12-1/5"      4.40 lbs



US280657.1.N



US280658.E



US280659.PA



US280660



US280660.E



US280660.PA

<b>US280657.1.N</b>	<b>Prism for Screw Clamps - nitrided</b>	<b>\$16</b>
	for spindle with ball diameter 5/8", compatible with 1-1/10" boreholes and clamps	
	Height: (c)	Ø:      Weight:
	15/16"	1-5/8"      0.20 lbs
<b>US280658.E</b>	<b>Prism for Screw Clamps - Stainless Steel</b>	<b>\$22</b>
	for spindle with ball diameter 5/8", compatible with 1-1/10" boreholes and clamps, for scratch-resistant surfaces (rust prevention)	
	Height: (c)	Ø:      Weight:
	13/16"	1-5/8"      0.22 lbs
<b>US280659.PA</b>	<b>Prism for Screw Clamps - Polyamide</b>	<b>\$19</b>
	for spindle with ball diameter 5/8", compatible with 1-1/10" boreholes and clamps, for scratch-sensitive surfaces	
	Height: (c)	Ø:      Weight:
	15/16"	1-5/8"      0.02 lbs
<b>US280660</b>	<b>Pressure Ball for Screw Clamps - burnished / nitrided</b>	<b>\$16</b>
	for spindle with ball diameter 5/8", only suitable for clamps, for clamping in corners or grooves	
	Height: (c)	Ø:      Weight:
	13/16"	1-3/8"      0.15 lbs
<b>US280660.E</b>	<b>Pressure Ball for Screw Clamps - Stainless Steel</b>	<b>\$22</b>
	for spindle with ball diameter 5/8", only suitable for clamps, for scratch-resistant surfaces (rust prevention), for clamping in corners or grooves	
	Height: (c)	Ø:      Weight:
	13/16"	1-3/8"      0.15 lbs
<b>US280660.PA</b>	<b>Pressure Ball for Screw Clamps - Polyamide</b>	<b>\$19</b>
	for spindle with ball diameter 5/8", only suitable for clamps, for scratch-sensitive surfaces, for clamping in corners or grooves	
	Height: (c)	Ø:      Weight:
	13/16"	1-3/8"      0.02 lbs



US280645.1



US280645.1.A

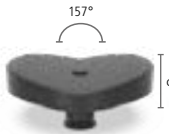


US280648.1.N

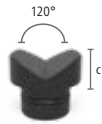


US280648.1.A

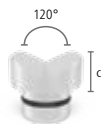
<b>US280645.1</b>	<b>Vario Prism Ø 2" 90° / 120° with screwed-in collar - burnished / nitrided</b>	<b>\$49</b>
	M16 thread for e.g. prism extensions Item No. US280649, for round and square pipes up to Ø 2"	
	Height: (c)      Ø:      Weight:	
	13/16"      2"      0.44 lbs	
<b>US280645.1.A</b>	<b>Vario Prism Ø 2" 90° / 120° with screwed-in collar - Aluminum</b>	<b>\$57</b>
	M16 thread for e.g. prism extensions Item No. US280649, for round and square pipes up to Ø 2"	
	Height: (c)      Ø:      Weight:	
	13/16"      2"      0.15 lbs	
<b>US280648.1.N</b>	<b>Prism Ø 2" 135° with screwed-in collar - nitrided</b>	<b>\$44</b>
	M16 thread for e.g. prism extensions Item No. US280649, for pipes up to Ø 3"	
	Height: (c)      Ø:      Weight:	
	13/16"      2"      0.44 lbs	
<b>US280648.1.A</b>	<b>Prism Ø 2" 135° with screwed-in collar - Aluminum</b>	<b>\$52</b>
	M16 thread for e.g. prism extensions Item No. US280649, for pipes up to Ø 3"	
	Height: (c)      Ø:      Weight:	
	13/16"      2"      0.15 lbs	



US280652.1



US280650



US280650.A

Find prisms out of aluminum and polyamide on our website.

<b>US280652.1</b>	<b>Prism Ø 4-3/4" 157° with screwed-in collar - burnished / nitrided</b>	<b>\$84</b>
	M16 thread for e.g. prism extensions Item No. US280649, for pipes up to Ø 15"	
	Height: (c)      Ø:      Weight:	
	1-3/16"      4-3/4"      3.75 lbs	
<b>US280650</b>	<b>Duo Prism Ø 1-5/8" - burnished / nitrided</b>	<b>\$32</b>
	for spindle with ball diameter 5/8", compatible with 1-1/10" boreholes and clamps	
	Height: (c)      Ø:      Weight:	
	1-3/8"      1-5/8"      0.33 lbs	
<b>US280650.A</b>	<b>Duo Prism Ø 1-5/8" - Aluminum</b>	<b>\$35</b>
	for spindle with ball diameter 5/8", compatible with 1-1/10" boreholes and clamps	
	Height: (c)      Ø:      Weight:	
	1-3/8"      1-5/8"      0.11 lbs	



## Accessories

### Imperial Series



US280822



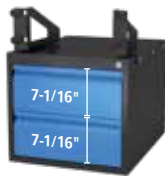
US280821



US280649.3

Find more prism extensions (Length 1", 2", 4") on our website.

<b>US280822</b>	<b>Screw Support Ø 3-1/8" - burnished</b>	<b>\$125</b>
vernier adjustment height in a range of 3" – 4-5/16", combinable with support set US280821 and prism extensions		
Height: (c)	Ø:	Weight:
3" – 4-5/16"	3-1/8"	5.07 lbs
<b>US280821</b>	<b>Set of Supports 11 pieces - burnished</b>	<b>\$82</b>
compensation of 1/32" – 4" height difference, with M10 thread		
Length: (a)	Ø:	Weight:
5"	2"	4.30 lbs
<b>US280649.3</b>	<b>Prism Extension 6" - burnished</b>	<b>\$38</b>
compatible with prisms, support set US280821 and screw support US280822		
Length: (a)	Ø:	Weight:
6"	1-1/10"	1.52 lbs



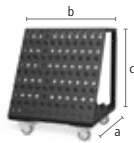
US280990.1



US281990.1

<b>US280990.1</b>	<b>Sub Table Box lockable incl. 2 drawers (2x US004230)</b>	<b>\$788</b>		
powder coated finish, Storage space at your welding table, lockable, incl. two keys, Compatible with PLUS tables, delivered pre-assembled, drawer pull-out length 15-3/4"				
Length: (a)	Width: (b)	Height: (c)	TF:	Weight:
24-13/16"	20-1/16"	16-9/16"	110 lbs	97 lbs
<b>US281990.1</b>	<b>Sub Table Box lockable for Basic incl. 2 drawers (2x US004230)</b>	<b>\$788</b>		
powder coated finish, Storage space at your welding table, lockable, incl. two keys, delivered pre-assembled, drawer pull-out length 15-3/4"				
Length: (a)	Width: (b)	Height: (c)	TF:	Weight:
24-13/16"	20-1/16"	16-9/16"	110 lbs	100 lbs

TF=max. load capacity per drawer;



US280910



US280920



US280820

<b>US280910</b>	<b>Tool Cart - powder coated finish</b>	<b>\$1,139</b>		
Max. total weight 525 lbs				
Length: (a)	Width: (b)	Height: (c)	Ø:	Weight:
25-9/16"	35-7/16"	40"	-	110.23 lbs
<b>US280920</b>	<b>Burner Holder - burnished</b>	<b>\$47</b>		
can be positioned in borehole				
Length: (a)	Width: (b)	Height: (c)	Ø:	Weight:
-	-	7-7/8"	-	1.10 lbs
<b>US280820</b>	<b>Brush Ø 1-3/16" with protecting cover</b>	<b>\$32</b>		
for cleaning boreholes				
Length: (a)	Width: (b)	Height: (c)	Ø:	Weight:
-	-	-	1-3/16"	0.13 lbs



siegmund



**PURITY**  
CYLINDER GASES INC.

# Accessories

## Imperial Series




US280852.1



US000830.N



US000810

<b>US280852.1</b>	<b>Hex wrench Size 6</b>	<b>\$24</b>
yellow		
Length: (a)	Width: (b)	Height: (c)
-	-	-
		Ø:
		-
		Weight:
		0.20 lbs
<b>US000830.N</b>	<b>Shipping Bracket with Fastening Plate - nitrided</b>	<b>\$89</b>
3,970 lbs load-bearing capacity (with 2x US280511), for a safe transportation of the welding tables and heavy Siegmund components, consider further instructions for use for the article online!		
		
Length: (a)	Width: (b)	Height: (c)
5-7/8"	5-7/8"	1"
		Ø:
		-
		Weight:
		10.4 lbs
		Load capacity:
		3,970 lbs
<b>US000810</b>	<b>Ground Connection Comfort</b>	<b>\$73</b>
guarantees 100% contact to the welding table, Mounting in system boreholes, Load up to 500 ampere, Cable cross section 0.109 - 0.147 square inch		
Length: (a)	Width: (b)	Height: (c)
-	-	-
		Ø:
		-
		Weight:
		10.4 lbs



USCS280715.4

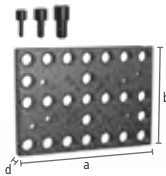


USCS280715.5

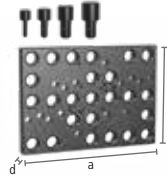
Find suitable quick-change clamps on page 47.

<b>USCS280715.4</b>	<b>Adapter with Hole Pattern Ø 2-3/4" / 5/8" eccentric - burnished</b>	<b>\$35</b>
for Toggle Clamp (Hole pattern 1-1/2"x3/4" / 1-1/2"x1-1/2" / 1-1/2"), for system borehole 28 mm (1-1/10")		
Height: (c)	Ø:	MS: (d)
1-3/16"	2-3/4"	5/8"
		Weight:
		1.06 lbs
<b>USCS280715.5</b>	<b>Adapter with Hole Pattern Ø 2-3/4" / 1-1/2" eccentric - burnished</b>	<b>\$47</b>
for Toggle Clamp (Hole pattern 1-1/2"x3/4" / 1-1/2"x1-1/2" / 1-1/2"), for system borehole 28 mm (1-1/10")		
Height: (c)	Ø:	MS: (d)
2-3/16"	2-3/4"	1-1/2"
		Weight:
		2.65 lbs

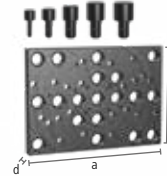
MS=Material thickness;






US280250.P



US280251.P



US280252.P

<b>US280250.P</b>	<b>Clamping Plate 150 lbs with Fixing Bolt - nitrided</b>	<b>\$910</b>
for flange US standard, ANSI / ASME B 16.5 150 lbs, from 1/2" to 8", delivery contents: 2x US280255, 2x US280256, 2x US280257		
		
Length: (a)	Width: (b)	MS: (d)
13-3/4"	9-7/8"	1"
		Weight:
		30.87 lbs
<b>US280251.P</b>	<b>Clamping Plate 300 lbs with Fixing Bolt - nitrided</b>	<b>\$1,035</b>
for flange US standard, ANSI / ASME B 16.5 300 lbs, from 1/2" to 8", delivery contents: 2x US280255, 2x US280256, 2x US280257, 2x US280258		
		
Length: (a)	Width: (b)	MS: (d)
13-3/4"	9-7/8"	1"
		Weight:
		30.87 lbs
<b>US280252.P</b>	<b>Clamping Plate 400-600 lbs with Fixing Bolt - nitrided</b>	<b>\$1,077</b>
for flange US standard, ANSI / ASME B 16.5 400-600 lbs, from 1/2" to 6", delivery contents: 2x US280255, 2x US280256, 2x US280257, 2x US280258, 2x US280259		
		
Length: (a)	Width: (b)	MS: (d)
13-3/4"	9-7/8"	1"
		Weight:
		30.87 lbs

MS=Material thickness;

## MAINTENANCE PRODUCTS FOR SYSTEM 16 | 28 – IMPERIAL SERIES:



US000924



US000926

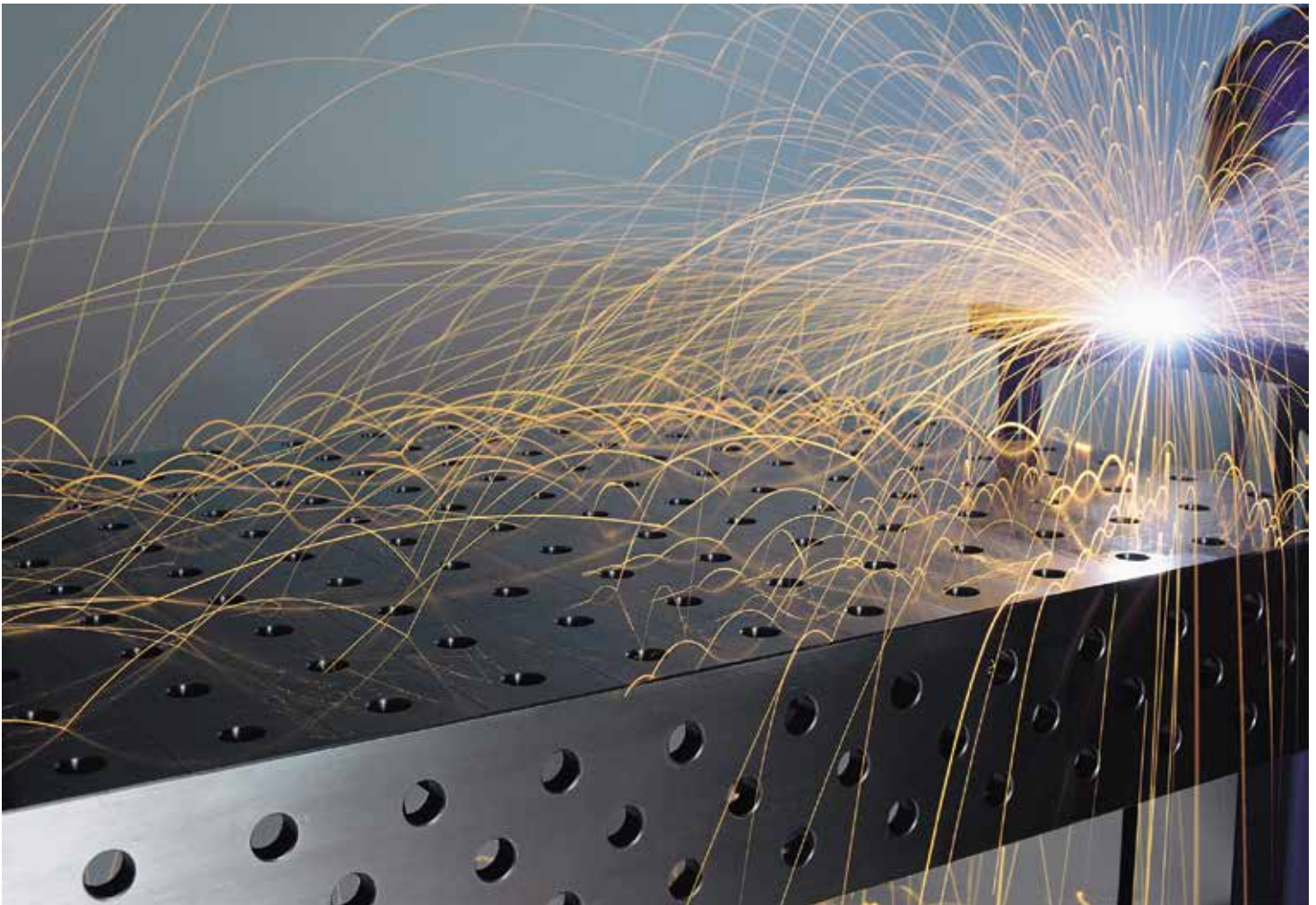


US000914



US000915

<b>US000924</b>	<b>Anti-Spatter Liquid with Corrosion Protection 0.26 gallons spray bottle</b>	<b>\$27</b>
	non-flammable, water soluble Anti-Spatter, prevents the welding table from welding spatter burn-in, safety data sheet available online	
	Weight:	
	2.43 lbs	
<b>US000926</b>	<b>Anti-Spatter Liquid with Corrosion Protection 1.32 gallons</b>	<b>\$82</b>
	non-flammable, water soluble Anti-Spatter, prevents the welding table from welding spatter burn-in, safety data sheet available online	
	Weight:	
	11.46 lbs	
<b>US000914</b>	<b>CleanBasic 0.26 gallons spray bottle</b>	<b>\$22</b>
	water-based cleaner, for daily table cleaning, prevents rusting, safety data sheet available online	
	Weight:	
	2.43 lbs	
<b>US000915</b>	<b>CleanBasic 1.32 gallons</b>	<b>\$71</b>
	water-based cleaner, for daily table cleaning, prevents rusting, safety data sheet available online	
	Weight:	
	11.46 lbs	



## Accessories

### Imperial Series



US160401.N



US160402.N



US160403.N

<b>US160401.N</b>	<b>Eccentric Stop Ø 1-3/4" - nitrided</b>	<b>\$25</b>
	used where space is restricted, stepless adjusting	
Ø:	MS: (d)	Weight:
1-3/4"	1/2"	0.29 lbs
<b>US160402.N</b>	<b>Eccentric Stop Ø 2-15/16" with M10 thread - nitrided</b>	<b>\$33</b>
	for ground connection, stepless adjusting	
Ø:	MS: (d)	Weight:
2-15/16"	1/2"	0.84 lbs
<b>US160403.N</b>	<b>Eccentric Stop Ø 2-15/16" - nitrided</b>	<b>\$32</b>
	also serves as a support surface, stepless adjusting	
Ø:	MS: (d)	Weight:
2-15/16"	1/2"	0.86 lbs

MS=Material thickness;



US160410.N



US160415



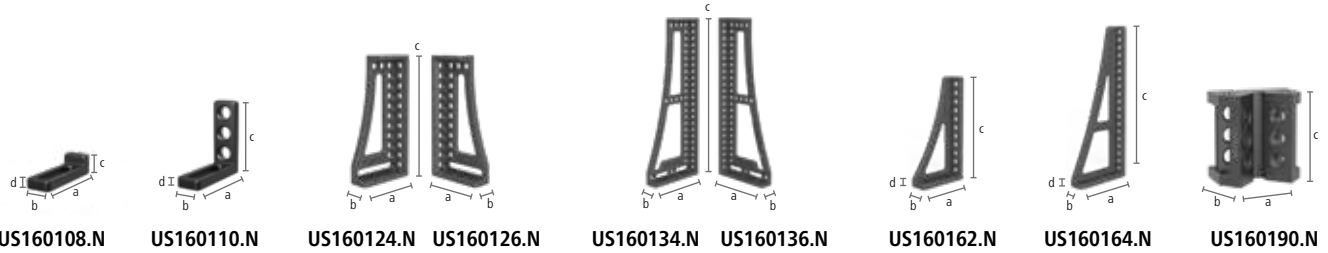
US160420.N



US160425.N

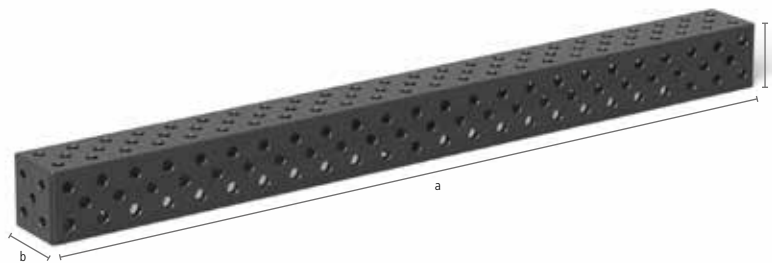
<b>US160410.N</b>	<b>Universal Stop 3-1/8" L - nitrided</b>	<b>\$51</b>			
	elongated hole				
Length: (a)	Width: (b)	MS: (d)	WS:	VB:	Weight:
3-1/8"	1-3/16"	1/2"	-	2"	0.27 lbs
<b>US160415</b>	<b>Flex Stop 1/2" x 3-1/8" Steel - Galvanized</b>	<b>\$25</b>			
	elongated hole				
Length: (a)	Width: (b)	MS: (d)	WS:	VB:	Weight:
3-1/8"	1-1/8"	1/2"	1/4"	2"	0.16 lbs
<b>US160420.N</b>	<b>Universal Stop 5" L - nitrided</b>	<b>\$60</b>			
	for use with both prisms and adapters				
Length: (a)	Width: (b)	MS: (d)	WS:	VB:	Weight:
5"	1-3/16"	1/2"	-	2"	0.51 lbs
<b>US160425.N</b>	<b>Universal Stop 12" M - nitrided</b>	<b>\$76</b>			
	7 system boreholes				
Length: (a)	Width: (b)	MS: (d)	WS:	VB:	Weight:
12"	1-15/16"	1/2"	-	4"	2.41 lbs

MS=Material thickness; VB=Adjusting range; WS=Wall thickness



<b>US160108.N</b>	<b>Stop and Clamping Square 1" X - nitrided</b>	<b>\$60</b>
	elongated hole, incl. INCH scale	
Length: (a)	Width: (b)	Height: (c)
3-9/16"	1-3/16"	1"
MS: (d)	Weight:	
1/2"	0.42 lbs	
<b>US160110.N</b>	<b>Stop and Clamping Square 3-9/16" L - nitrided</b>	<b>\$84</b>
	borehole / elongated hole, incl. INCH scale	
Length: (a)	Width: (b)	Height: (c)
3-9/16"	1-3/16"	3-9/16"
MS: (d)	Weight:	
1/2"	0.64 lbs	
<b>US160124+26.N</b>	<b>Stop and Clamping Square 12" GK left / right - nitrided</b>	<b>each \$185</b>
	stop on left / right, incl. INCH scale, usable as table extension, for heavy components, material: GGG40, recommended as a pair	
Length: (a)	Width: (b)	Height: (c)
5-13/16"	1-15/16"	12"
MS: (d)	Weight:	
1/2"	7.21 lbs	
<b>US160134+36.N</b>	<b>Stop and Clamping Square 24" GK left / right - nitrided</b>	<b>each \$283</b>
	stop on left / right, incl. INCH scale, usable as table extension, for heavy components, material: GGG40, recommended as a pair	
Length: (a)	Width: (b)	Height: (c)
8-13/16"	1-15/16"	24"
MS: (d)	Weight:	
1/2"	15.48 lbs	
<b>US160162.N</b>	<b>Stop and Clamping Square 12" G - nitrided</b>	<b>\$136</b>
	stop on left, incl. INCH scale, usable as table extension, material: GGG40	
Length: (a)	Width: (b)	Height: (c)
5-7/8"	1-15/16"	12"
MS: (d)	Weight:	
1/2"	5.53 lbs	
<b>US160164.N</b>	<b>Stop and Clamping Square 20" G - nitrided</b>	<b>\$191</b>
	stop on left, incl. INCH scale, usable as table extension, material: GGG40	
Length: (a)	Width: (b)	Height: (c)
7-11/16"	1-15/16"	20"
MS: (d)	Weight:	
1/2"	9.97 lbs	
<b>US160190.N</b>	<b>Corner Connection, Cast Iron - nitrided</b>	<b>\$252</b>
	45° diagonal table extension, material: GGG40	
Length: (a)	Width: (b)	Height: (c)
4"	2-9/16"	3-15/16"
MS: (d)	Weight:	
-	3.7 lbs	

MS=Material thickness;



**US160374.P**

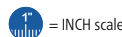
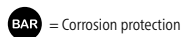
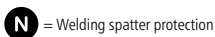
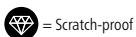


**Square U-Shape 4/4 - Plasma nitrided**

with diagonal grid, as table extension and vertical superstructure, to connect tables (with connecting bolt US160560.N), for heavy components, from 24" with mounting holes for table legs, from 36" support through table leg required

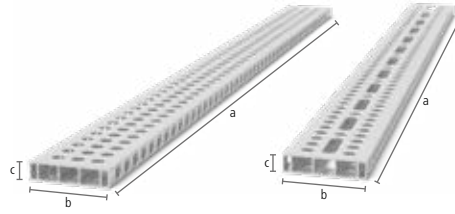
	Length: (a)	Width: (b)	Height: (c)	MS: (d)	Weight:	
<b>US160356.P</b>	12"	4"	3-15/16"	1/2"	20 lbs	<b>\$651</b>
<b>US160362.P</b>	24"	4"	3-15/16"	1/2"	38 lbs	<b>\$1,042</b>
<b>US160374.P</b>	48"	4"	3-15/16"	1/2"	73 lbs	<b>\$1,156</b>
<b>US160386.P</b>	72"	4"	3-15/16"	1/2"	109 lbs	<b>\$1,704</b>

MS=Material thickness;



## Accessories

### Imperial Series



USAR16014122.V

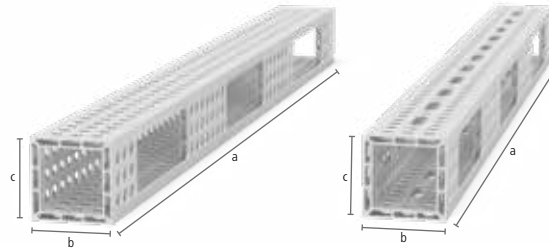
USAR16014122.VL



#### Aluminum profile bracket 4"x1"

Stable stop due to large dimensions. Version with full grid with many clamping options. Version with elongated hole: Variable clamping also possible at an angle. Requires Clamping Bolt without slot triple. When table extension exceeds 40" additional support through an extra leg is required, consider further instructions for use for the article online!

	Style:	Length: (a)	Width: (b)	Height: (c)	Weight:	
USAR16014061.V	1" Grid	2'	4"	1"	2.08 lbs	\$41
USAR16014061.VL	1" Grid elongated hole	2'	4"	1"	2.01 lbs	\$47
USAR16014122.V	1" Grid	4'	4"	1"	4.13 lbs	\$89
USAR16014122.VL	1" Grid elongated hole	4'	4"	1"	4 lbs	\$104
USAR16014183.V	1" Grid	6'	4"	1"	6.07 lbs	\$146
USAR16014183.VL	1" Grid elongated hole	6'	4"	1"	5.96 lbs	\$166



USAQ16014122.V

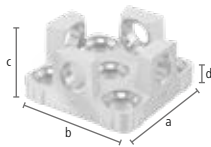
USAQ16014122.VLL



#### Aluminum profile U-shape 4"x4"

Clamping on up to 4 sides possible. Requires Clamping Bolt without slot Double, as table extension and vertical clamping surface. When table extension exceeds 40" additional support through an extra leg is required (Reduction Bushing US000546 required), consider further instructions for use for the article online! Flatness tolerance < 1/30" / 40"

	Style:	Length: (a)	Width: (b)	Height: (c)	Weight:	
USAQ16014061.V	1" Grid	2'	4"	4"	5.57 lbs	\$98
USAQ16014061.VLL	1" Grid elongated hole	2'	4"	4"	5.37 lbs	\$101
USAQ16014122.V	1" Grid	4'	4"	4"	10.91 lbs	\$221
USAQ16014122.VLL	1" Grid elongated hole	4'	4"	4"	10.51 lbs	\$229
USAQ16014183.V	1" Grid	6'	4"	4"	16.51 lbs	\$362
USAQ16014183.VLL	1" Grid elongated hole	6'	4"	4"	15.54 lbs	\$377



USAP160399.AT



USAP160602.N



USAP160605.N

#### USAP160399.AT Adapter for table connection for aluminum profiles - Aluminum-Titanium \$65

for fastening the profiles on the front side, insert into profile and clamp to table side, for fixing: 2x US160511, 4x USAP160528 (not included in the delivery)

Length: (a)	Width: (b)	Height: (c)	MS: (d)	Weight:
3"	3"	5/8"	1/2"	0.46 lbs

#### USAP160602.N Adapter for screw clamps double - nitrided \$22

for using screw clamps in aluminum profiles, for Screw Clamps: US160610, US160630, US160604, US160620

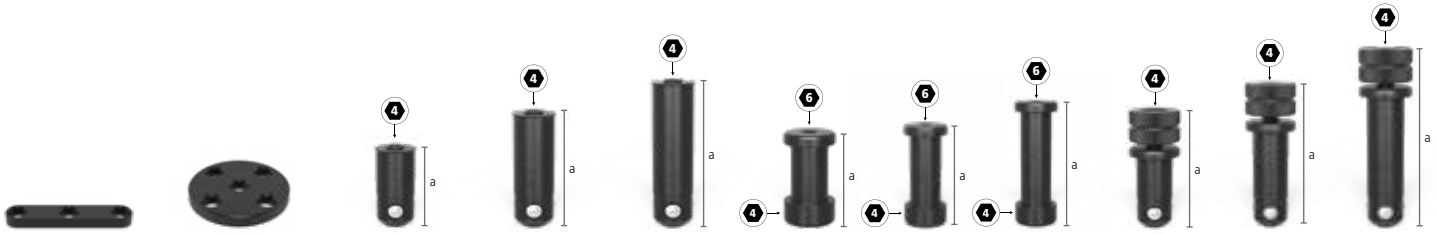
Length: (a)	Width: (b)	Height: (c)	Ø:	Weight:
2-3/8"	-	-	1"	0.29 lbs

#### USAP160605.N Adapter for screw clamps basic - nitrided \$19

for using screw clamps in aluminum profiles, for Screw Clamps: US160610, US160630, US160604, US160620

Length: (a)	Width: (b)	Height: (c)	Ø:	Weight:
1-7/8"	-	-	1"	0.24 lbs

MS=Material thickness;

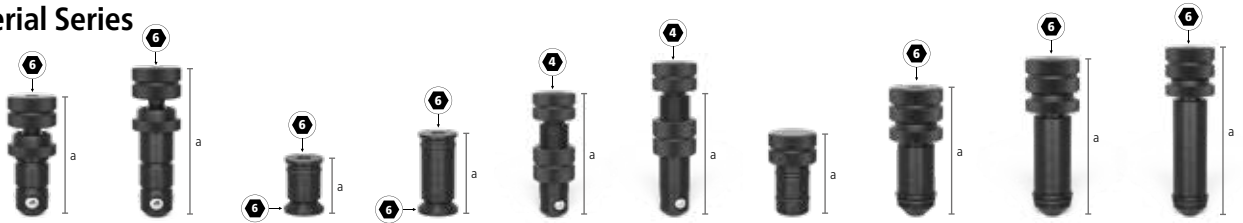


Part Number	Description	Price
USAP160602.X7	<b>Oblong adapter for screw clamps</b>	\$16
	for using screw clamps in aluminum profiles, for Screw Clamps: US160610, US160630, US160604, US160620, for fixing: Clamping bolt without slot	
	Length: (a)      Width: (b)      Height: (c)      Ø:      Weight:	
	4-7/8"      7/8"      1/2"      -      0.42 lbs	
USAP160603.X7	<b>Round adapter for screw clamps</b>	\$21
	for using screw clamps in aluminum profiles, for Screw Clamps: US160610, US160630, US160604, US160620, for fixing: Clamping bolt without slot	
	Length: (a)      Width: (b)      Height: (c)      Ø:      Weight:	
	3-7/8"      3-7/8"      1/2"      -      1.33 lbs	
USAP160528	<b>Flush Mount Bolt without slot double - burnished</b>	\$47
	for clamping 2 components, only for clamping aluminum profiles, countersunk connection of components, tighten aluminum parts only hand-tight	
	Length: (a)      Ø:      SK:      AM:      AM1:      ZK:      Weight:	
	1-1/4"      5/8"      12,365 lbf      7 lbf-ft      1.84 lbf-ft      225 lbf      0.09 lbs	
USAP160529	<b>Flush Mount Bolt without slot triple - burnished</b>	\$57
	for clamping 3 components, only for clamping aluminum profiles, countersunk connection of components, tighten aluminum parts only hand-tight	
	Length: (a)      Ø:      SK:      AM:      AM1:      ZK:      Weight:	
	1-3/4"      5/8"      12,365 lbf      7 lbf-ft      1.84 lbf-ft      225 lbf      0.13 lbs	
USAP160530	<b>Flush Mount Bolt without slot quadruple - burnished</b>	\$65
	for clamping 4 components, only for clamping aluminum profiles, countersunk connection of components, tighten aluminum parts only hand-tight	
	Length: (a)      Ø:      SK:      AM:      AM1:      ZK:      Weight:	
	2-3/16"      5/8"      12,365 lbf      7 lbf-ft      1.84 lbf-ft      225 lbf      0.18 lbs	
US160583	<b>Connecting Bolt with collar double - burnished</b>	\$35
	for connecting 2 components, to connect tables, U-squares and aluminum profiles, suitable for elongated holes, fixed long-term connection	
	Length: (a)      Ø:      SK:      AM:      AM1:      ZK:      Weight:	
	1-1/2"      5/8"      12,365 lbf      11 lbf-ft      11 lbf-ft      674 lbf      0.15 lbs	
US160584	<b>Connecting Bolt with collar triple - burnished</b>	\$41
	for connecting 3 components, to connect tables, U-squares and aluminum profiles, suitable for elongated holes, fixed long-term connection	
	Length: (a)      Ø:      SK:      AM:      AM1:      ZK:      Weight:	
	2"      5/8"      12,365 lbf      11 lbf-ft      11 lbf-ft      674 lbf      0.20 lbs	
US160585	<b>Connecting Bolt with collar quadruple - burnished</b>	\$47
	for connecting 4 components, to connect tables, U-squares and aluminum profiles, suitable for elongated holes, fixed long-term connection	
	Length: (a)      Ø:      SK:      AM:      AM1:      ZK:      Weight:	
	2-1/2"      5/8"      12,365 lbf      11 lbf-ft      11 lbf-ft      674 lbf      0.24 lbs	
US160511	<b>Fast Clamping Bolt without slot double - burnished</b>	\$57
	for clamping 2 components, recommended for clamping aluminum profiles, without O-ring slot for a smooth surface, MUST NOT be used for connecting tables and U-shaped squares	
	Length: (a)      Ø:      SK:      AM:      AM1:      ZK:      Weight:	
	2-1/16"      5/8"      12,365 lbf      7 lbf-ft      1.84 lbf-ft      2,250 lbf      0.18 lbs	
US160513	<b>Fast Clamping Bolt without slot triple - burnished</b>	\$70
	for clamping 3 components, recommended for clamping aluminum profiles, without O-ring slot for a smooth surface, MUST NOT be used for connecting tables and U-shaped squares	
	Length: (a)      Ø:      SK:      AM:      AM1:      ZK:      Weight:	
	2-9/16"      5/8"      12,365 lbf      7 lbf-ft      1.84 lbf-ft      2,250 lbf      0.22 lbs	
US160515	<b>Fast Clamping Bolt without slot quadruple - burnished</b>	\$81
	for clamping 4 components, recommended for clamping aluminum profiles, without O-ring slot for a smooth surface, MUST NOT be used for connecting tables and U-shaped squares	
	Length: (a)      Ø:      SK:      AM:      AM1:      ZK:      Weight:	
	3-1/16"      5/8"      12,365 lbf      7 lbf-ft      1.84 lbf-ft      2.250 lbf      0.27 lbs	

SK=Shearing Force; AM=Tightening Torque Steel; AM1= Tightening Torque Aluminum; ZK=Tensile Force; Clamping torque dependent on material.

## Accessories

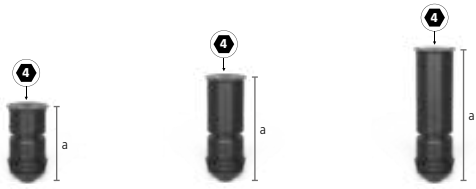
### Imperial Series



Part Number	Description	Price
<b>US160532</b>	<b>Universal Bolt short - burnished</b>	<b>\$59</b>
for clamping 2 components, Clamping range 7/8" – 1-1/10", MUST NOT be used for connecting tables and U-shaped squares		
Length: (a)	Ø:	SK:
2-5/16"	5/8"	11,240 lbf
AM:	AM1:	ZK:
7 lbf-ft	1.84 lbf-ft	2,250 lbf
ZK1:	Weight:	
-	0.24 lbs	
<b>US160533</b>	<b>Universal Bolt long - burnished</b>	<b>\$73</b>
for clamping 3 components, Clamping range 1-11/32" – 1-5/8", MUST NOT be used for connecting tables and U-shaped squares		
Length: (a)	Ø:	SK:
2-13/16"	5/8"	11,240 lbf
AM:	AM1:	ZK:
7 lbf-ft	1.84 lbf-ft	2,250 lbf
ZK1:	Weight:	
-	0.26 lbs	
<b>US160560.N</b>	<b>Connecting Bolt short - nitrided</b>	<b>\$28</b>
for connecting 2 components, to connect tables and U-squares, not suitable for aluminum profiles, not suitable for elongated holes, fixed long-term connection		
Length: (a)	Ø:	SK:
1"	5/8"	11,240 lbf
AM:	AM1:	ZK:
11 lbf-ft	-	900 lbf
ZK1:	Weight:	
-	0.07 lbs	
<b>US160561</b>	<b>Connecting Bolt long - burnished</b>	<b>\$35</b>
for connecting 3 components, to connect tables and U-squares, not suitable for aluminum profiles, not suitable for elongated holes, fixed long-term connection		
Length: (a)	Ø:	SK:
1-7/16"	5/8"	11,240 lbf
AM:	AM1:	ZK:
11 lbf-ft	-	900 lbf
ZK1:	Weight:	
-	0.11 lbs	
<b>US160571</b>	<b>Fast Clamping Bolt adjustable without slot short - burnished</b>	<b>\$63</b>
Clamping dimension 1/2" – 15/16", clamping of customized laser cut profiles, suitable for aluminum profiles, tighten aluminum parts only hand-tight, MUST NOT be used for connecting tables and U-shaped squares		
Length: (a)	Ø:	SK:
3-1/16"	5/8"	12,365 lbf
AM:	AM1:	ZK:
7 lbf-ft	-	2,250 lbf
ZK1:	Weight:	
-	0.29 lbs	
<b>US160573</b>	<b>Fast Clamping Bolt adjustable without slot long - burnished</b>	<b>\$76</b>
Clamping dimension 15/16" – 1-7/16", clamping of customized laser cut profiles, suitable for aluminum profiles, tighten aluminum parts only hand-tight, MUST NOT be used for connecting tables and U-shaped squares		
Length: (a)	Ø:	SK:
3-9/16"	5/8"	12,365 lbf
AM:	AM1:	ZK:
7 lbf-ft	-	2,250 lbf
ZK1:	Weight:	
-	0.33 lbs	
<b>US160540</b>	<b>Positioning Bolt - burnished</b>	<b>\$19</b>
substitutes a second clamping bolt cost-effectively, MUST NOT be used for connecting tables and U-shaped squares		
Length: (a)	Ø:	SK:
1-1/2"	5/8"	-
AM:	AM1:	ZK:
-	-	-
ZK1:	Weight:	
-	0.15 lbs	
<b>US160590</b>	<b>Areal Clamping Bolt double - burnished</b>	<b>\$70</b>
for clamping 2 components, Clamping range approx. 7/8" – 1", recommended for clamping aluminum profiles, without O-ring slot for a smooth surface, MUST NOT be used for connecting tables and U-shaped squares		
Length: (a)	Ø:	SK:
2-3/16"	5/8"	11,200 lbf
AM:	AM1:	ZK:
7 lbf-ft	7 lbf-ft	900 lbf
ZK1:	Weight:	
450 lbf	0.24 lbs	
<b>US160590.3</b>	<b>Areal Clamping Bolt triple - burnished</b>	<b>\$76</b>
for clamping 3 components, Clamping range approx. 1-5/16" – 1-1/2", recommended for clamping aluminum profiles, without O-ring slot for a smooth surface, MUST NOT be used for connecting tables and U-shaped squares		
Length: (a)	Ø:	SK:
2-5/8"	5/8"	11,200 lbf
AM:	AM1:	ZK:
7 lbf-ft	7 lbf-ft	900 lbf
ZK1:	Weight:	
450 lbf	0.29 lbs	
<b>US160590.4</b>	<b>Areal Clamping Bolt quadruple - burnished</b>	<b>\$84</b>
for clamping 4 components, Clamping range approx. 1-13/16" – 1-15/16", recommended for clamping aluminum profiles, without O-ring slot for a smooth surface, MUST NOT be used for connecting tables and U-shaped squares		
Length: (a)	Ø:	SK:
3-1/8"	5/8"	11,200 lbf
AM:	AM1:	ZK:
7 lbf-ft	7 lbf-ft	900 lbf
ZK1:	Weight:	
450 lbf	0.31 lbs	

SK=Shearing Force; AM=Tightening Torque Steel; AM1= Tightening Torque Aluminum; ZK=Tensile Force Steel; ZK1=Tensile Force Aluminum; Clamping torque dependent on material.








US160595      US160595.3      US160595.4

<b>US160595</b>	<b>Areal Clamping Flush Mount Bolt double - burnished</b>							<b>\$60</b>
for clamping 2 components, countersunk connection of components, Clamping range approx. 7/8" – 1", MUST NOT be used for connecting tables and U-shaped squares, not suitable for elongated holes								
Length: (a)	Ø:	SK:	AM:	AM1:	ZK:	ZK1:	Weight:	
1-5/16"	5/8"	10,100 lbf	7 lbf-ft	7 lbf-ft	670 lbf	450 lbf	0.11 lbs	
<b>US160595.3</b>	<b>Areal Clamping Flush Mount Bolt triple - burnished</b>							<b>\$68</b>
for clamping 3 components, countersunk connection of components, Clamping range approx. 1-5/16" – 1-1/2", MUST NOT be used for connecting tables and U-shaped squares, not suitable for elongated holes								
Length: (a)	Ø:	SK:	AM:	AM1:	ZK:	ZK1:	Weight:	
1-3/4"	5/8"	10,100 lbf	7 lbf-ft	7 lbf-ft	670 lbf	450 lbf	0.15 lbs	
<b>US160595.4</b>	<b>Areal Clamping Flush Mount Bolt quadruple - burnished</b>							<b>\$74</b>
for clamping 4 components, countersunk connection of components, Clamping range approx. 1-13/16" – 1-15/16", MUST NOT be used for connecting tables and U-shaped squares, not suitable for elongated holes								
Length: (a)	Ø:	SK:	AM:	AM1:	ZK:	ZK1:	Weight:	
2-1/4"	5/8"	10,100 lbf	7 lbf-ft	7 lbf-ft	670 lbf	450 lbf	0.18 lbs	

SK=Shearing Force; AM=Tightening Torque Steel; AM1=Tightening Torque Aluminum; ZK=Tensile Force Steel; ZK1=Tensile Force Aluminum; Clamping torque dependent on material.



US160740      US160740.1      US160740.2

<b>US160740</b>	<b>Magnetic Clamping Bolt 34 - Aluminum</b>			<b>\$24</b>
	Length of Shaft 1/2", clamping without the use of tools, suitable for pressure-sensitive parts or when counterholding is not possible			
Length: (a)	Ø:	Weight:		
1-5/16"	5/8"	0.04 lbs		
<b>US160740.1</b>	<b>Magnetic Clamping Bolt 46 - Aluminum</b>			<b>\$27</b>
	Length of Shaft 15/16", clamping without the use of tools, suitable for pressure-sensitive parts or when counterholding is not possible			
Length: (a)	Ø:	Weight:		
1-13/16"	5/8"	0.07 lbs		
<b>US160740.2</b>	<b>Magnetic Clamping Bolt 58 - Aluminum</b>			<b>\$32</b>
	Length of Shaft 1-7/16", clamping without the use of tools, suitable for pressure-sensitive parts or when counterholding is not possible			
Length: (a)	Ø:	Weight:		
2-5/16"	5/8"	0.09 lbs		

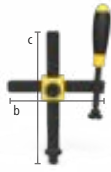


US160706      US160707

<b>US160706</b>	<b>Quick-Change Clamp 100</b>				<b>\$101</b>
Length clamping arm 3-15/16", Clamping range 0" – 3-15/16", Mounting in system boreholes					
Length: (a)	Width: (b)	Height: (c)	Weight:		
13-6/16"	1-3/16"	6"	2.65 lbs		
<b>US160707</b>	<b>Quick-Change Clamp 160</b>				<b>\$101</b>
Length clamping arm 6-5/16", Clamping range 0" – 5-1/2", Mounting in system boreholes					
Length: (a)	Width: (b)	Height: (c)	Weight:		
14-3/16"	1-3/16"	6"	2.65 lbs		

## Accessories

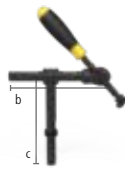
## Imperial Series



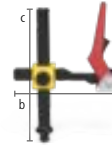
US160610



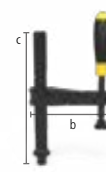
US160630



US160604



US160606



US160620

<b>US160610</b>	<b>Professional Screw Clamp - burnished / nitrided</b>	<b>\$97</b>
	interchangeable prism, ball diameter spindle 5/16"	
	max. holding force Width: (b) Height: (c) Weight:	
	562 lbf 6-7/16" 7-7/8" 2.65 lbs	
<b>US160630</b>	<b>Professional Screw Clamp 45°/90° - burnished</b>	<b>\$92</b>
	interchangeable prism, ball diameter spindle 5/16", stepless rotation from 0°-360°	
	max. holding force Width: (b) Height: (c) Weight:	
	562 lbf - 7-7/8" 1.65 lbs	
<b>US160604</b>	<b>Pipe Clamp Universal - burnished</b>	<b>\$98</b>
	interchangeable prism, ball diameter spindle 5/16", clamping at an angle of +/- 42°, fastening with an adjusting ring	
	max. holding force Width: (b) Height: (c) Weight:	
	135 lbf 6-1/2" 5-7/8" 1.76 lbs	
<b>US160606</b>	<b>Professional Fast Tension Clamp - burnished / nitrided</b>	<b>\$131</b>
	recommended only for plasma nitrided welding tables	
	max. holding force Width: (b) Height: (c) Weight:	
	562 lbf 5-3/16" 5-7/8" 1.98 lbs	
<b>US160620</b>	<b>Basic Screw Clamp - burnished / nitrided</b>	<b>\$78</b>
	interchangeable prism, ball diameter spindle 5/16"	
	max. holding force Width: (b) Height: (c) Weight:	
	562 lbf 5-1/16" 7-7/8" 2.09 lbs	



US160656



US160656.E



US160656.PA



US160660



US160660.E



US160660.PA

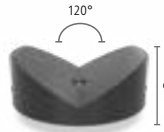
<b>US160656</b>	<b>Prism for Screw Clamps - burnished / nitrided</b>	<b>\$14</b>
	for spindle with ball diameter 5/16", compatible with 5/8" boreholes and clamps	
	Height: (c) Ø: Weight:	
	9/16" 1" 0.04 lbs	
<b>US160656.E</b>	<b>Prism for Screw Clamps - Stainless Steel</b>	<b>\$21</b>
	for spindle with ball diameter 5/16", compatible with 5/8" boreholes and clamps, for scratch-resistant surfaces (rust prevention)	
	Height: (c) Ø: Weight:	
	9/16" 1" 0.04 lbs	
<b>US160656.PA</b>	<b>Prism for Screw Clamps - Polyamide</b>	<b>\$14</b>
<b>PA</b>	for spindle with ball diameter 5/16", compatible with 5/8" boreholes and clamps, for scratch-sensitive surfaces	
	Height: (c) Ø: Weight:	
	9/16" 1" 0.02 lbs	
<b>US160660</b>	<b>Pressure Ball for Screw Clamps - burnished</b>	<b>\$14</b>
	for spindle with ball diameter 5/16", only suitable for clamps, for clamping in corners or grooves	
	Height: (c) Ø: Weight:	
	1/2" 13/16" 0.04 lbs	
<b>US160660.E</b>	<b>Pressure Ball for Screw Clamps - Stainless Steel</b>	<b>\$21</b>
	for spindle with ball diameter 5/16", only suitable for clamps, for scratch-resistant surfaces (rust prevention), for clamping in corners or grooves	
	Height: (c) Ø: Weight:	
	1/2" 13/16" 0.04 lbs	
<b>US160660.PA</b>	<b>Pressure Ball for Screw Clamps - Polyamide</b>	<b>\$16</b>
<b>PA</b>	for spindle with ball diameter 5/16", only suitable for clamps, for scratch-sensitive surfaces, for clamping in corners or grooves	
	Height: (c) Ø: Weight:	
	1/2" 13/16" 0.02 lbs	



US160650



US160645.1.N



US160652.1

Find prisms out of aluminum and polyamide on our website.

<b>US160650</b>	<b>Duo Prism Ø 1" - burnished / nitrided</b>	<b>\$21</b>
for spindle with ball diameter 5/16", only suitable for clamps		
Height: (c)	Ø:	Weight:
3/4"	1"	0.09 lbs
<b>US160645.1.N</b>	<b>Vario Prism Ø 2" 90° / 120° with screwed-in collar - nitrided</b>	<b>\$60</b>
M10 thread for e.g. prism extensions Item No. US160649, for round and square pipes up to Ø 3"		
Height: (c)	Ø:	Weight:
13/16"	2"	0.46 lbs
<b>US160652.1</b>	<b>Prism Ø 3-1/8" 120° with screwed-in collar - burnished / nitrided</b>	<b>\$68</b>
M10 thread for e.g. prism extensions Item No. US160649, for pipes up to Ø 4-3/4"		
Height: (c)	Ø:	Weight:
1-1/8"	3-1/8"	1.67 lbs



US160822



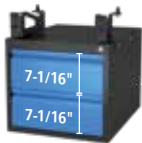
US160821



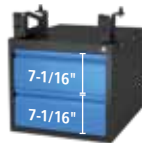
US160649.2

Find more prism extensions (Length 3/8", 2") on our website.

<b>US160822</b>	<b>Screw Support Ø 1-15/16" - burnished</b>	<b>\$55</b>
vernier adjustment height in a range of 2-5/32" – 3", combinable with support set US160821 and prism extension		
Height: (c)	Ø:	Weight:
2-3/16" – 2-15/16"	1-15/16"	1.57 lbs
<b>US160821</b>	<b>Set of Supports 7 pieces - burnished</b>	<b>\$63</b>
compensation of 1/32" – 2-3/8" height difference, with M10 thread		
Height: (c)	Ø:	Weight:
2-9/16"	1"	0.37 lbs
<b>US160649.2</b>	<b>Prism Extension 4" - burnished</b>	<b>\$36</b>
compatible with prisms, support set US160821 and screw support US160822		
Length: (a)	Ø:	Weight:
4"	5/8"	0.33 lbs



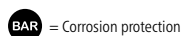
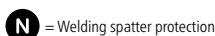
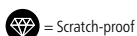
US160990.1



US162990.1

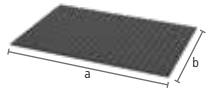
<b>US160990.1</b>	<b>Sub Table Box lockable incl. 2 drawers (2x US004230)</b>	<b>\$788</b>		
powder coated finish, Storage space at your welding table, lockable, incl. two keys, delivered pre-assembled, drawer pull-out length 15-3/4"				
Length: (a)	Width: (b)	Height: (c)	TF:	Weight:
24-13/16"	20-1/16"	16-9/16"	110 lbs	94 lbs
<b>US162990.1</b>	<b>Sub Table Box lockable for PLUS Table incl. 2 drawers (2x US004230)</b>	<b>\$788</b>		
powder coated finish, Storage space at your welding table, lockable, incl. two keys, delivered pre-assembled, drawer pull-out length 15-3/4"				
Length: (a)	Width: (b)	Height: (c)	TF:	Weight:
24-13/16"	20-1/16"	16-9/16"	110 lbs	93 lbs

TF=max. load capacity per drawer;



## Accessories

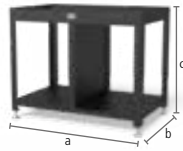
### Imperial Series



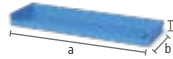
US164004.X7



US00002594



US004002



US004020



US004025



US004100

Item No.	Description	Price
<b>US164004.X7</b>	<b>Perforated plate for Siegmund Workstation - Plasma nitrided</b>	<b>\$1,046</b>
For mounting the Workstation perforated plate on the basic frame, 8x mounting screws (Item No. US00002594) are required (not included in the delivery)		
Length: (a)	Width: (b)	MS: (d)
48"	32"	1/2"
TF:	Weight:	
-	201 lbs	
<b>US00002594</b>	<b>Mounting screw for Workstation perforated plate</b>	<b>\$5</b>
For mounting the Workstation perforated plate on the basic frame, not included in the delivery of the plate		
Length: (a)	Width: (b)	Height: (c)
-	-	-
TF:	Weight:	
-	0.04 lbs	
<b>US004002</b>	<b>Siegmund Workstation Basic frame</b>	<b>\$1,022</b>
left / right: 23-5/8" space for drawers, incl. assembly instructions for self-assembly		
Length: (a)	Width: (b)	Height: (c)
40-1/2"	24-13/16"	33"
TF:	Weight:	
2,205 lbs	99.21 lbs	
<b>US004020</b>	<b>Shelf</b>	<b>\$40</b>
powder coated finish, placeable on both sides		
Length: (a)	Width: (b)	Height: (c)
19"	5-5/8"	1-9/16"
TF:	Weight:	
22.05 lbs	3.64 lbs	
<b>US004025</b>	<b>Toolwall incl. Shelf</b>	<b>\$153</b>
powder coated finish, placeable on both sides		
Length: (a)	Width: (b)	Height: (c)
-	-	-
TF:	Weight:	
66.14 lbs	17.35 lbs	
<b>US004100</b>	<b>Equipment Workstation with 4 casters</b>	<b>\$180</b>
switch between foot and casters possible		
Length: (a)	Width: (b)	Height: (c)
-	-	-
TF:	Weight:	
881.85 lbs	11.68 lbs	

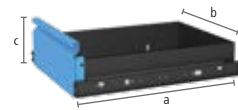
MS=Material thickness; TF=Load capacity;



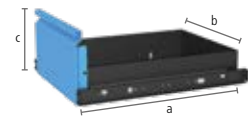
US004220.WS



US004225.WS



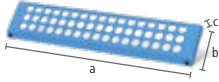
US004230.WS



US004235.WS

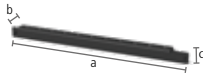
Item No.	Description	Price
<b>US004220.WS</b>	<b>Drawer with clip rail and mounting, 2-3/8" for Workstation</b>	<b>\$100</b>
powder coated finish, upgrading possible at any time, placeable on both sides, drawer pull-out length 15-3/4"		
Length: (a)	Width: (b)	Height: (c)
23-1/4"	15-3/4"	2-3/8"
TF:	Weight:	
110 lbs	16.53 lbs	
<b>US004225.WS</b>	<b>Drawer with clip rail and mounting, 4-3/4" for Workstation</b>	<b>\$111</b>
powder coated finish, upgrading possible at any time, placeable on both sides, drawer pull-out length 15-3/4"		
Length: (a)	Width: (b)	Height: (c)
23-1/4"	15-3/4"	4-3/4"
TF:	Weight:	
110 lbs	19.84 lbs	
<b>US004230.WS</b>	<b>Drawer with clip rail and mounting, 7-1/16" for Workstation</b>	<b>\$122</b>
powder coated finish, upgrading possible at any time, placeable on both sides, drawer pull-out length 15-3/4"		
Length: (a)	Width: (b)	Height: (c)
23-1/4"	15-3/4"	7-1/16"
TF:	Weight:	
110 lbs	20.94 lbs	
<b>US004235.WS</b>	<b>Drawer with clip rail and mounting, 9-7/16" for Workstation</b>	<b>\$133</b>
powder coated finish, upgrading possible at any time, placeable on both sides, drawer pull-out length 15-3/4"		
Length: (a)	Width: (b)	Height: (c)
23-1/4"	15-3/4"	9-7/16"
TF:	Weight:	
110 lbs	22.05 lbs	

TF=Load capacity;



**US164035**

<b>US164035</b>	<b>Bolt and prism holder System 16</b>	<b>\$46</b>
powder coated finish, placeable on both sides		
Length: (a)	Width: (b)	Height: (c)
19"	3/4"	3-7/8"
Weight:		1.63 lbs

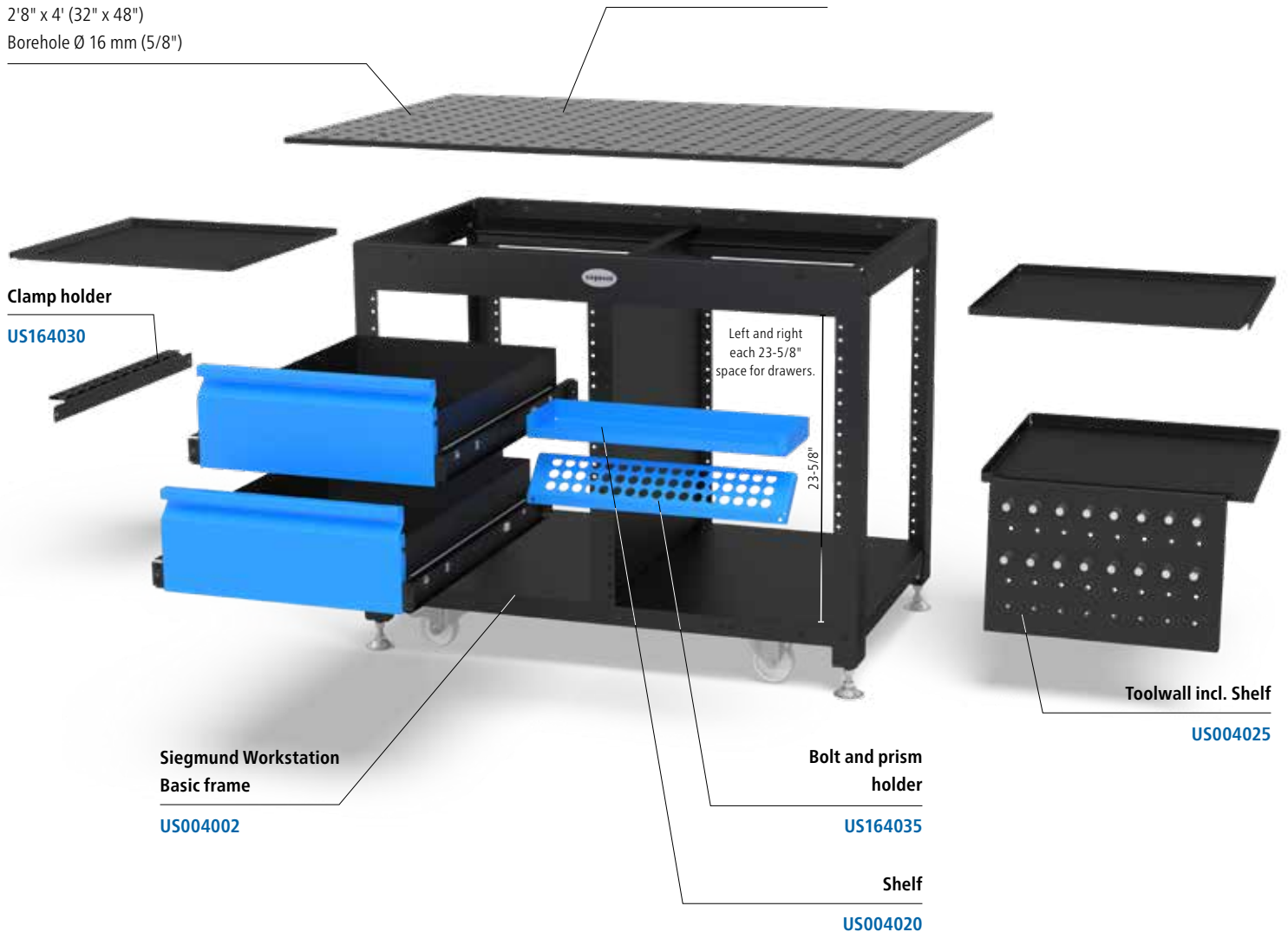


**US164030**

<b>US164030</b>	<b>Clamp holder System 16</b>	<b>\$38</b>
powder coated finish, placeable on both sides		
Length: (a)	Width: (b)	Height: (c)
22-7/8"	1-3/4"	1-1/2"
Weight:		1.83 lbs

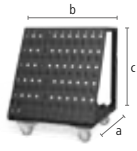
Perforated plate Through-hardened tool steel X8.7,  
plasma nitrided and BAR-coated  
2'8" x 4' (32" x 48")  
Borehole Ø 16 mm (5/8")

Boreholes surface 2" x 2" Grid  
Material thickness approx. 1/2"



# Accessories

## Imperial Series



US160910



US160920



US160820



US160852



US160830

<b>US160910</b>	<b>Tool Cart - powder coated finish</b>	<b>\$930</b>
Max. total weight 525 lbs		
Length: (a)	Width: (b)	Height: (c)
21-7/8"	22-1/16"	26-5/8"
Ø:		Weight:
-		48 lbs
<b>US160920</b>	<b>Burner Holder - burnished</b>	<b>\$35</b>
can be positioned in borehole		
Length: (a)	Width: (b)	Height: (c)
-	-	7-7/8"
Ø:		Weight:
-		0.60 lbs
<b>US160820</b>	<b>Brush with protecting cover</b>	<b>\$25</b>
for cleaning boreholes		
Length: (a)	Width: (b)	Height: (c)
-	-	-
Ø:		Weight:
-		11/16"
		0.11 lbs
<b>US160852</b>	<b>Hex wrench Size 4</b>	<b>\$19</b>
yellow		
Length: (a)	Width: (b)	Height: (c)
-	-	-
Ø:		Weight:
-		0.13 lbs
<b>US160830</b>	<b>Shipping Bracket with Fastening Plate</b>	<b>\$95</b>
1,540 lbs load-bearing capacity (with 4x US160511), for a safe transportation of the welding tables and heavy Siegmund components, consider further instructions for use for the article online!		
Length: (a)	Width: (b)	Height: (c)
3-15/16"	3-15/16"	1"
Ø:		Weight:
-		3.7 lbs
		Load capacity:
		1,540 lbs



USCS160715.4

Find suitable quick-change clamps on page 47.

<b>USCS160715.4</b>	<b>Adapter with Hole Pattern Ø 2-3/8" / 5/8" eccentric - burnished</b>	<b>\$35</b>
for Toggle Clamp (Hole pattern 1-1/2"x3/4" / 1-1/2"), for system borehole 16 mm (5/8")		
Height: (c)	Ø:	MS: (d)
1"	2-3/8"	5/8"
		Weight:
		0.79 lbs

MS=Material thickness;



US280780

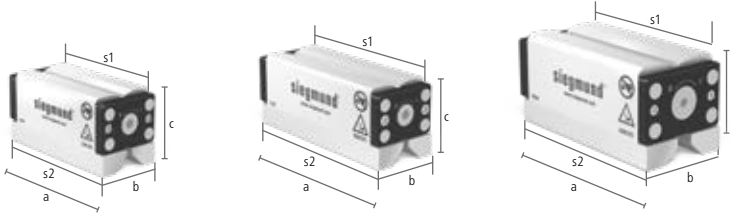


US160780



US004302

<b>US280780</b>	<b>Table press System 28</b>	<b>\$1,697</b>
compressive force of 5,512 lbs, total stroke 2-3/8", operating force 75 lbf, fixation always required in two places		
Weight:		
14.78 lbs		
<b>US160780</b>	<b>Table press System 16</b>	<b>\$1,697</b>
compressive force of 5,512 lbs, total stroke 2-3/8", operating force 75 lbf, fixation always required in two places		
Weight:		
14.34 lbs		
<b>US004302</b>	<b>Bench vice 125 for System 28 - with 1-1/10" boreholes</b>	<b>\$296</b>
Jaw width 4-15/16", Opening stroke 5-1/2", Mounting: System 16: 2x US160511 + 2x US000546, System 28: 2x US280511		
Weight:		
29.77 lbs		

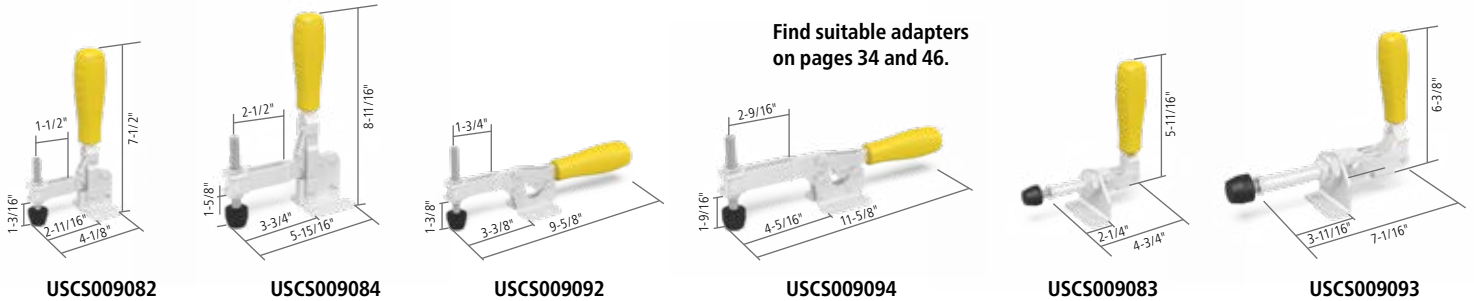


US000780

US000781

US000782

<b>US000780</b>	<b>Duo Magnet Clamping Block 5</b>	<b>\$437</b>
Retention force 1,124 lbf, flexible clamping on steel surfaces without interference contours (e.g. Siegmund welding table), with hexagon socket (Size 8)		
Clamping surface (s1)	Clamping surface (s2)	Length: (a)
4-3/4" x 2-1/4"	5-3/8" x 2-1/2"	5-5/8"
Width: (b)	Height: (c)	Weight:
2-1/2"	2-13/16"	9 lbs
<b>US000781</b>	<b>Duo Magnet Clamping Block 7</b>	<b>\$546</b>
Retention force 1,574 lbf, flexible clamping on steel surfaces without interference contours (e.g. Siegmund welding table), with hexagon socket (Size 8)		
Clamping surface (s1)	Clamping surface (s2)	Length: (a)
6-1/8" x 2-1/4"	6-3/4" x 2-1/2"	7"
Width: (b)	Height: (c)	Weight:
2-1/2"	2-13/16"	11 lbs
<b>US000782</b>	<b>Duo Magnet Clamping Block 10</b>	<b>\$723</b>
Retention force 2,248 lbf, flexible clamping on steel surfaces without interference contours (e.g. Siegmund welding table), with hexagon socket (Size 8)		
Clamping surface (s1)	Clamping surface (s2)	Length: (a)
6-3/8" x 3"	7" x 3-7/16"	7-1/4"
Width: (b)	Height: (c)	Weight:
3-7/16"	3-7/16"	20 lbs



USCS009082

USCS009084

USCS009092

USCS009094

USCS009083

USCS009093

<b>USCS009082</b>	<b>Vertical clamp 1800</b>	<b>\$47</b>
without adapter, Hole pattern 1-1/2"x3/4", opening angle: 110°		
max. holding force	Length: (a)	Width: (b)
405 lbf	4-1/8"	2-3/16"
Height: (c)	Weight:	
7-1/2"	0.95 lbs	
<b>USCS009084</b>	<b>Vertical clamp 2200</b>	<b>\$52</b>
without adapter, Hole pattern 1-1/2"x1-1/2", opening angle: 105°		
max. holding force	Length: (a)	Width: (b)
495 lbf	5-15/16"	2-1/2"
Height: (c)	Weight:	
8-11/16"	1.54 lbs	
<b>USCS009092</b>	<b>Horizontal clamp 1800</b>	<b>\$44</b>
without adapter, Hole pattern 1-1/2"x3/4", with less interference contour compared to vertical clamps, opening angle: 90°		
max. holding force	Length: (a)	Width: (b)
405 lbf	9-5/8"	2-3/16"
Height: (c)	Weight:	
-	0.95 lbs	
<b>USCS009094</b>	<b>Horizontal clamp 3000</b>	<b>\$55</b>
without adapter, Hole pattern 1-1/2"x1-1/2", with less interference contour compared to vertical clamps, opening angle: 90°		
max. holding force	Length: (a)	Width: (b)
674 lbf	11-5/8"	2-1/2"
Height: (c)	Weight:	
-	1.61 lbs	
<b>USCS009083</b>	<b>Horizontal Toggle Clamp 2500</b>	<b>\$65</b>
without adapter, Hole pattern 1-1/2"		
max. holding force	Length: (a)	Width: (b)
562 lbf	4-3/4"	-
Height: (c)	Weight:	
-	1.12 lbs	
<b>USCS009093</b>	<b>Horizontal Toggle Clamp 4000</b>	<b>\$92</b>
without adapter, Hole pattern 1-1/2"		
max. holding force	Length: (a)	Width: (b)
899 lbf	7-1/16"	-
Height: (c)	Weight:	
-	2.20 lbs	

Prices quoted are in U.S. Dollars, excluding any taxes and transportation costs. Minimum order must exceed \$50.00. Technical data is subject to change without notice. From warehouse in Charlotte, North Carolina. The sale of Siegmund products is restricted to a worldwide network of approved importers and resale is through appointed distributors only. Our General Business Terms apply. Information printed in this catalog is subject to change without notice including price changes and printing errors.

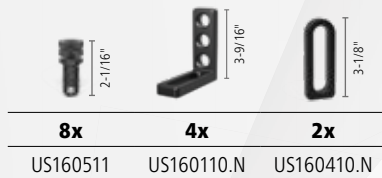
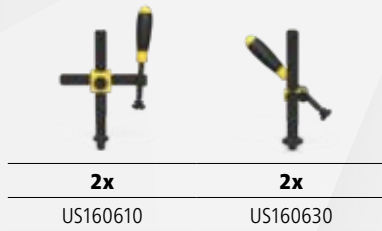


# Limited Time Offer

## Welding Table Starter Bundle

- ✓ Hardened tool steel X8.7, plasma nitrided
- ✓ Borehole Ø 5/8"
- ✓ INCH scale engraved on the surface
- ✓ Boreholes on the surface 2" x 2" grid
- ✓ Weight approx. 309 lbs

### System 16 - Imperial Series Siegmund® Welding Table Professional Extreme 8.7 2' x 3' Bundle



was \$3,738  
Item No. US168105.X7

# \$2,999

**Limited quantity: Only 200 Bundles  
at this price thru 05/31/2023. Order now!**

Total weight of this offer (Welding table incl. Bundle) approx. 330 lbs.



The Official USA Head Importer - Siegmund Welding Tables and Fixtures



**QUANTUM**  
M A C H I N E R Y G R O U P